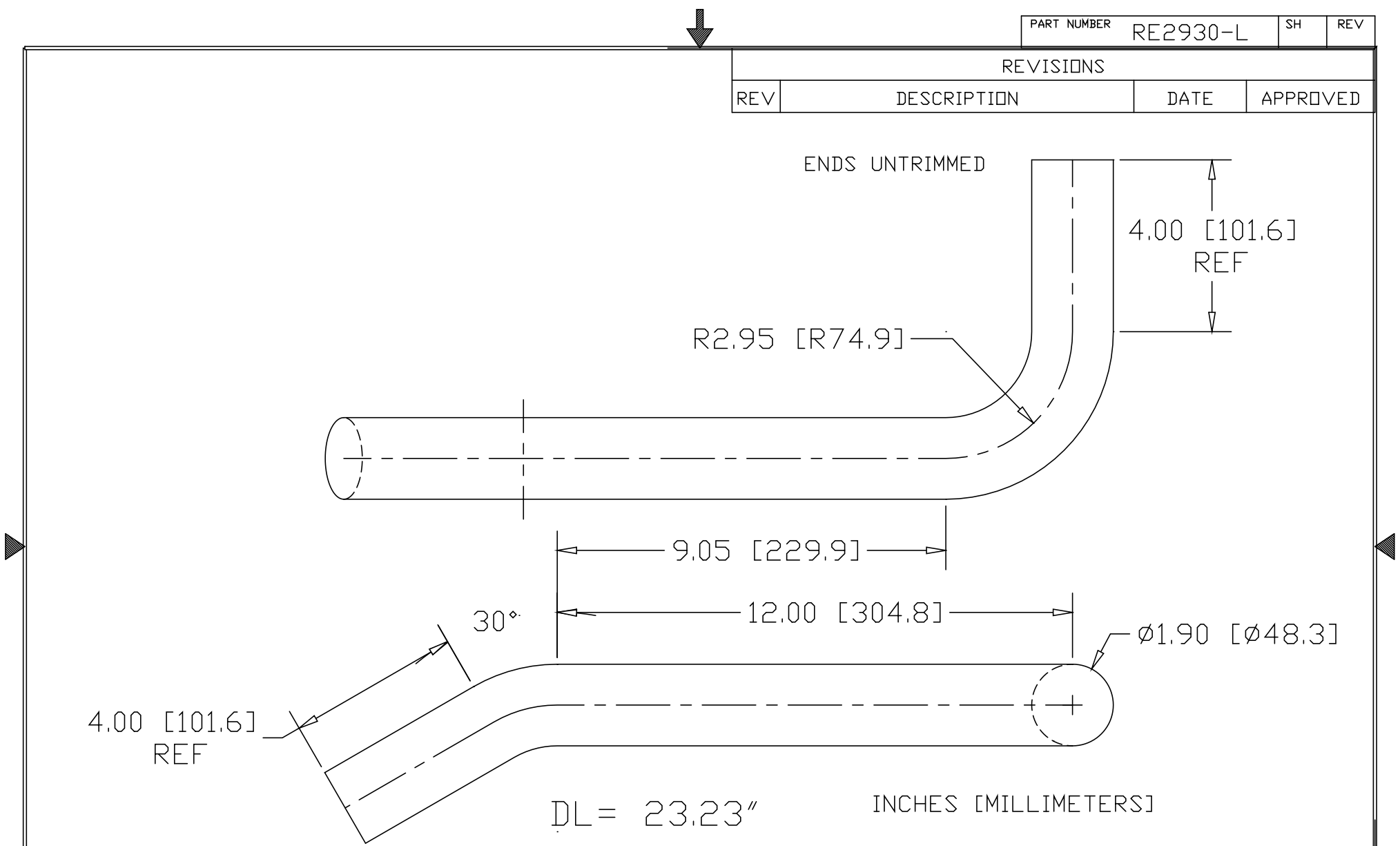



| REVISIONS | | | |
|-----------|-------------|------|----------|
| REV | DESCRIPTION | DATE | APPROVED |
| | | | |



| | | | |
|-----------|----------|---|---|
| PART NAME | | RAIL END 30° LEFT HAND | |
| MATERIAL | | 1-1/2" SCH 40 ALUMINUM PIPE 6063-T1 | |
| DATE | 03/29/07 |  | THE WAGNER COMPANIES R & B WAGNER, INC. AND J. G. BRAUN CO. |
| DRAWN BY | RDC | | |
| FINISH | MILL | SIZE | WEIGHT |
| | | A | 5.3 LBS |
| | | PART NUMBER | REV |
| | | RE2930-L | |