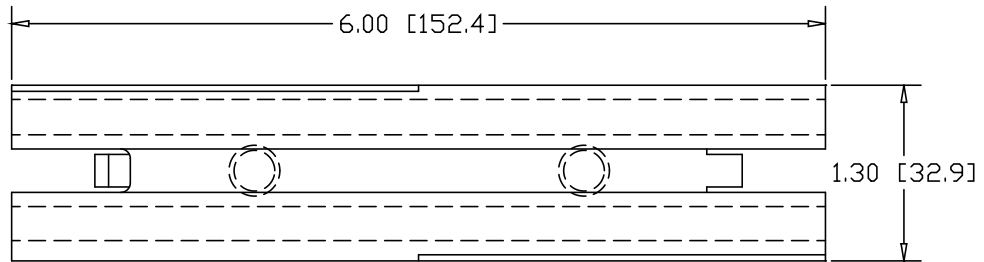
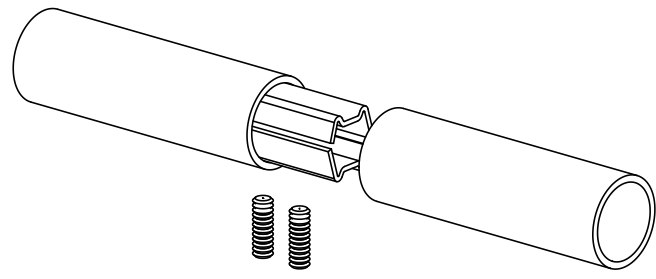
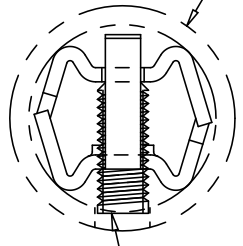


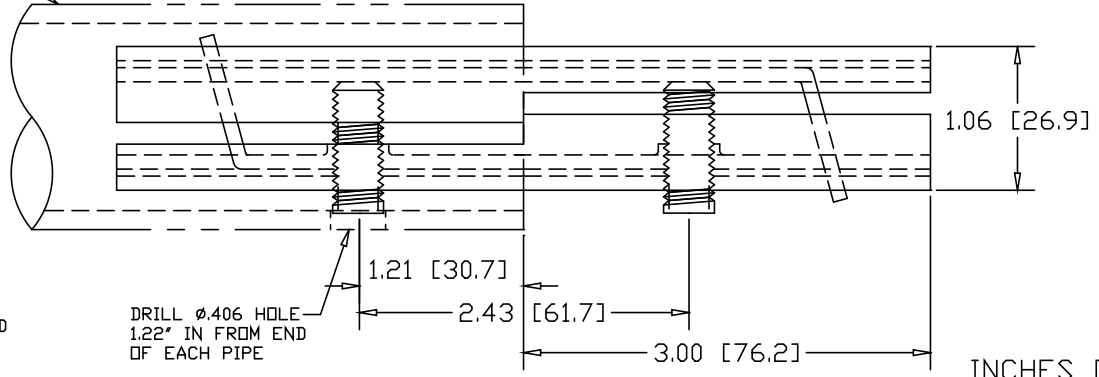
REVISIONS			
REV	DESCRIPTION	DATE	APPROVED



1-1/4" SCHEDULE 40 PIPE  
(1.66 O.D. X .140 WALL)




3/8-16 SOCKET HEAD  
SET-SCREW X 1" LG



DRILL  $\phi$ .406 HOLE  
1.22" IN FROM END  
OF EACH PIPE

INCHES [MILLIMETERS]

ALTERNATE MATERIAL	PART NO.
12 GA. STEEL HOT DIP GALVANIZED	G3356
12 GA. STEEL ZINC PLATED	PL3356
.090 (3003) ALUMINUM ASTM B209	3372
.090 (304) STAINLESS STEEL ASTM A240	3389

PART NAME		1-1/4" SCH 40 PIPE DOUBLE-LOCK SPLICE-LOCK 6" LONG		
MATERIAL		12 GA. HRP&D STEEL ASTM A569		
DATE	3/22/93	 <b>R &amp; B WAGNER, INC.</b>		
DRAWN BY	RJF			
FINISH	MILL	SIZE	WEIGHT	PART NUMBER
		A	.75 LBS	3356
				REV