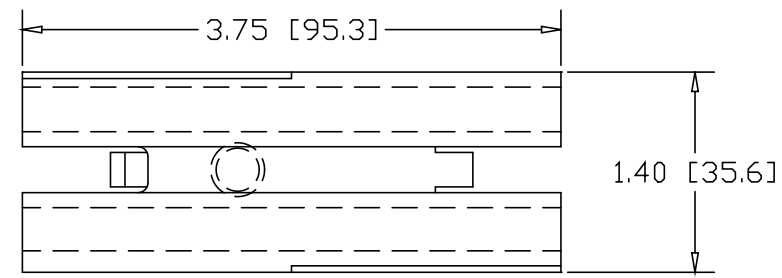
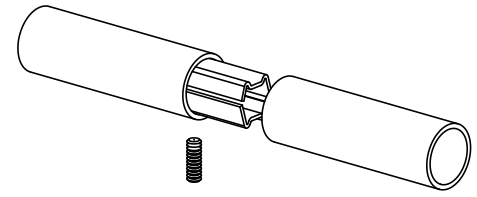
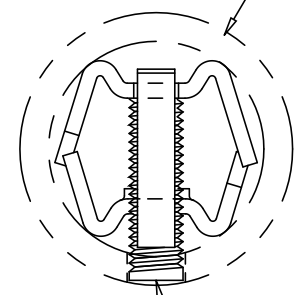


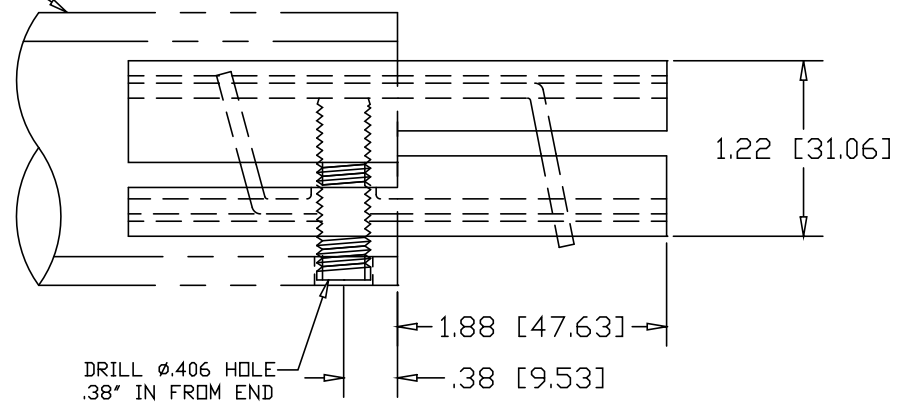
REVISIONS			
REV	DESCRIPTION	DATE	APPROVED



1-1/2" SCH80 PIPE  
(1.90 O.D. X .200 WALL)




3/8-16  
SOCKET HEAD  
SET-SCREW



DRILL  $\phi$ .406 HOLE  
.38" IN FROM END

INCHES [MILLIMETERS]

ALTERNATE MATERIAL	PART NO.
12 GA. STEEL HOT DIP GALVANIZED	G3348
12 GA. STEEL ZINC PLATED	PL3348
.090 (3003) ALUMINUM ASTM B209	3319H

PART NAME		1-1/2" SCH80 PIPE SINGLE-LOCK SPLICE-LOCK					
MATERIAL		12 GA. HRP&D STEEL ASTM A569					
DATE	9/17/01	 <b>THE WAGNER COMPANIES</b> R & B WAGNER, INC. AND J. G. BRAUN CO.					
DRAWN BY	JAH						
FINISH	MILL						
SIZE	A	WEIGHT	.48 LBS	PART NUMBER	3348	REV	