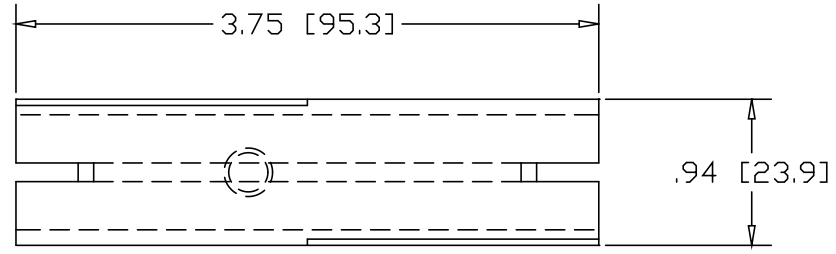
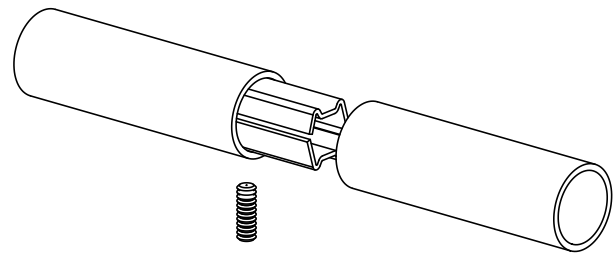
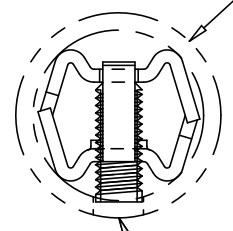


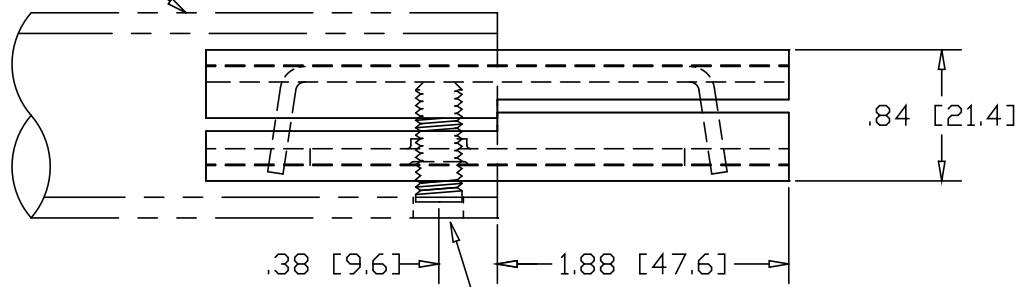
REVISIONS			
REV	DESCRIPTION	DATE	APPROVED



1" SCH 40 PIPE  
(1.315 O.D. X .133 WALL)




5/16-18 SOCKET HEAD  
SET-SCREW



DRILL  $\phi$ .34[8.6] HOLE  
.38[9.6] IN FROM END  
FOR SET-SCREW

INCHES [MILLIMETERS]

ALTERNATE MATERIAL	PART NO.
12 GA. STEEL HOT DIP GALVANIZED	G3310
12 GA. STEEL ZINC PLATED	PL3310
.090 (3003) ALUMINUM ASTM B209	3311
.090 (304) STAINLESS STEEL ASTM A240	3313

PART NAME		1" SCH40 PIPE SINGLE-LOCK SPLICE-LOCK					
MATERIAL		12 GA. HRP&D STEEL ASTM A569					
DATE	9/25/97	 <b>THE WAGNER COMPANIES</b> R & B WAGNER, INC. AND J. G. BRAUN CO.					
DRAWN BY	RJF						
FINISH	MILL						
SIZE	A	WEIGHT	.26 LBS	PART NUMBER	3310	REV	