

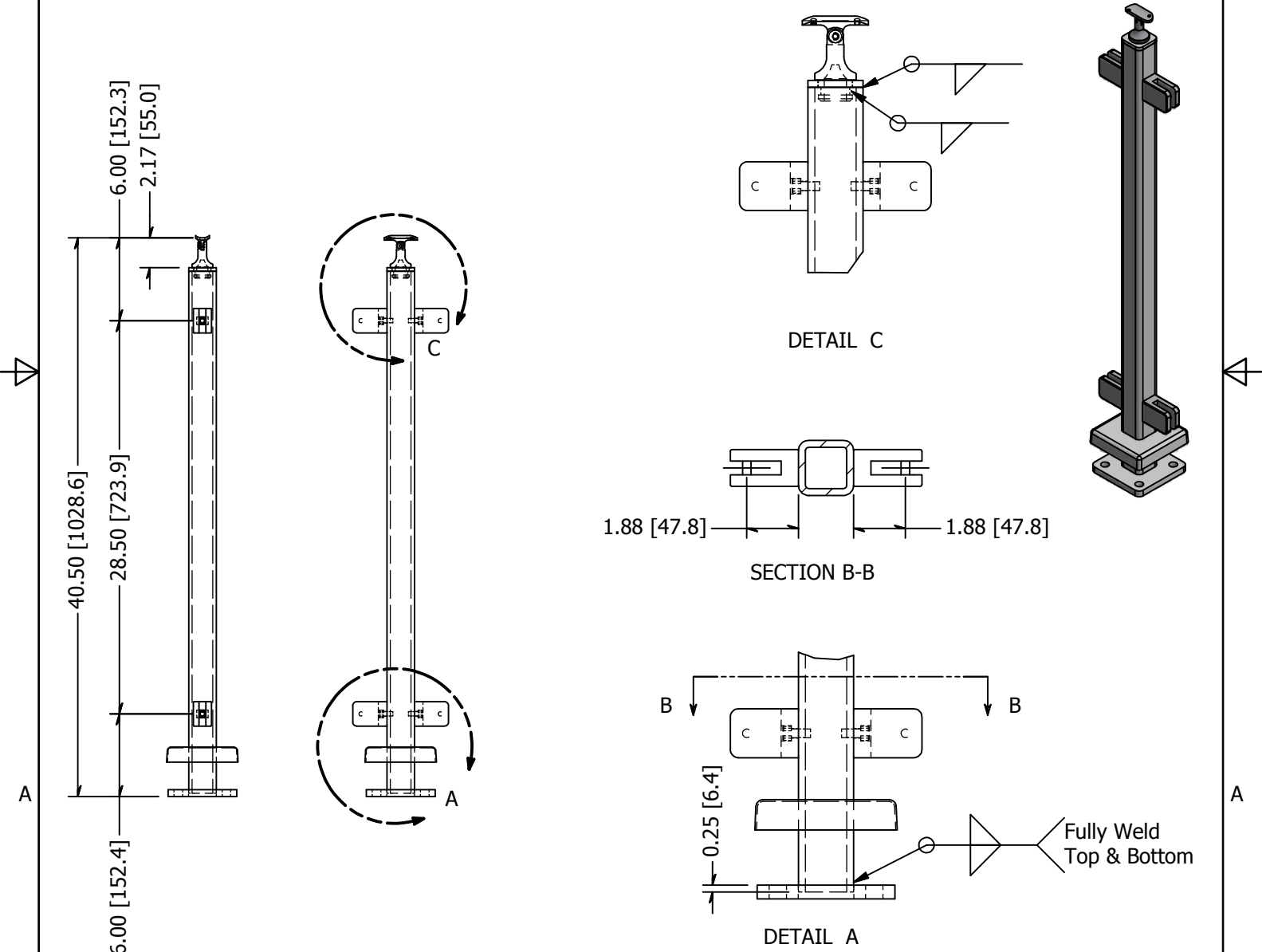


PARTS LIST

ITEM	QTY	PART NUMBER	DESCRIPTION
1	1	EXP260-22A	Post, Stainless Steel, 2.00 Inch Square x 0.25 Inch Wall, #4 Brushed Finish, Type 316, Blank
2	1	EXP260-21B	Flange, Stainless Steel, 5 Inch x 5 inch x 1/2 Inch Thick, 4 Mounting Holes, Mill Finish Type 316
3	1	EXP260-21C	Flange, Stainless Steel,Cover, For 1/2" x 2" Post, #4 Satin Finish, Type 316
4	1	EXP260-21D	Plate, Stainless Steel, For 2.00 Inch x .025 Inch Wall Square Tube, #4 Brushed
5	1	LU329	BRACKET SS POST ADJUST 1.50 .120 IN WALL POST W/PIVOT SADDLE
6	4	GR310F.4	Clip, Stainless Steel, Panel Mounting, Flat Base, Square Type, #4 Satin Finish, Type 316
7	4	SCH3N3816-0075	Screw, Stainless Steel, 3/8-16 x 0.75 Inch, Socket Head Cap Screw

B

B



A

A

<p>TOLERANCE</p> <p>X.X..... = ± .060</p> <p>X.XX..... = ± .030</p> <p>X.XXX..... = ± .010</p> <p>XX°..... = ± 1°</p> <p>UNLESS OTHERWISE NOTED</p>	<p>MATERIAL:</p> <p>316 Stainless</p>	<p>DESCRIPTION:</p> <p>Post, Stainless Steel, 2.00 Inch Square x 0.25 Inch Wall, #4 Brushed Finish, Type 316</p>	
	<p>FINISH:</p> <p>#4</p>	<p>DATE:</p> <p>11/3/2014</p>	<p>REV:</p> <p>-</p>
	<p>WEIGHT:</p> <p>27.17 lbmass</p>	<p>DRAWN BY:</p> <p>T. Kolbach</p>	<p>WAGNER</p> <p>COLLABORATIVE METAL WORKS</p>
	<p>ITEM NUMBER:</p> <p>LG32242AMSM.4</p>		

