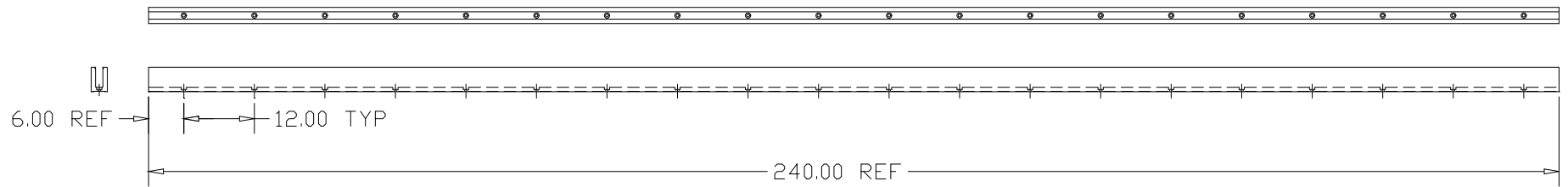
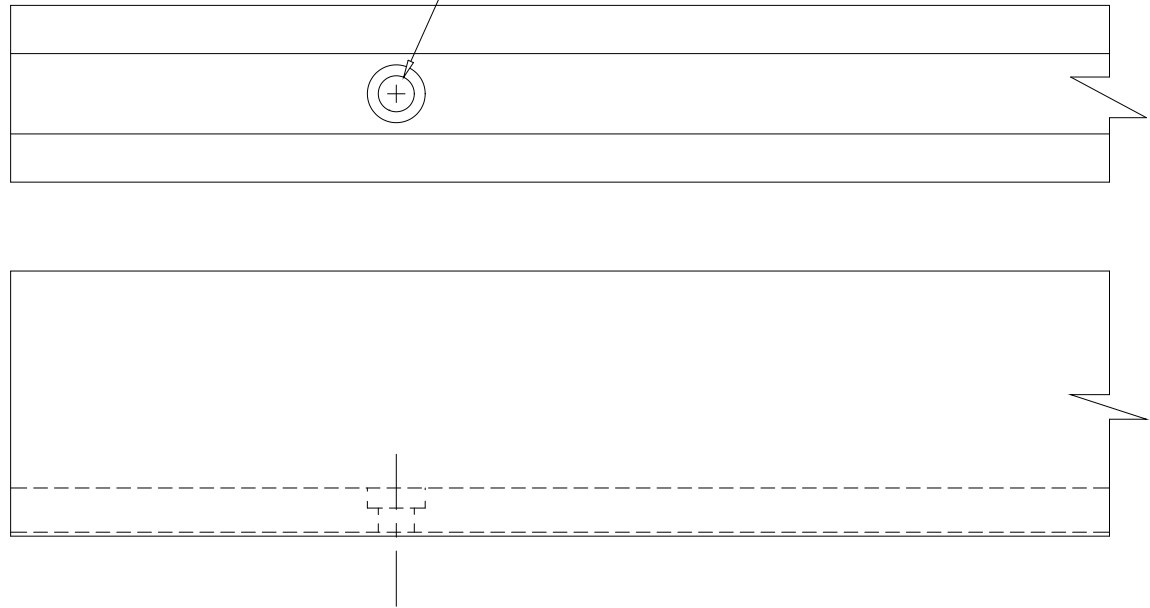
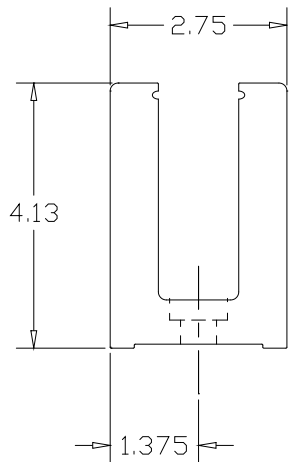



REVISIONS			
REV	DESCRIPTION	DATE	APPROVED



Ø.500 THRU
C'BORE TO Ø.900 X .370 DEEP TYP
12.00" ON-CENTER



PART NAME		SHOE MOLDING, COUNTERBORED HOLES					
MATERIAL		6063-T52 ALUMINUM					
DATE	01/18/10		THE WAGNER COMPANIES R & B WAGNER, INC. AND J. G. BRAUN CO.				
DRAWN BY	RJF						
FINISH	MILL						
SIZE	A	WEIGHT	8.368 LBS/FT	PART NUMBER	GR2876HCB	REV	