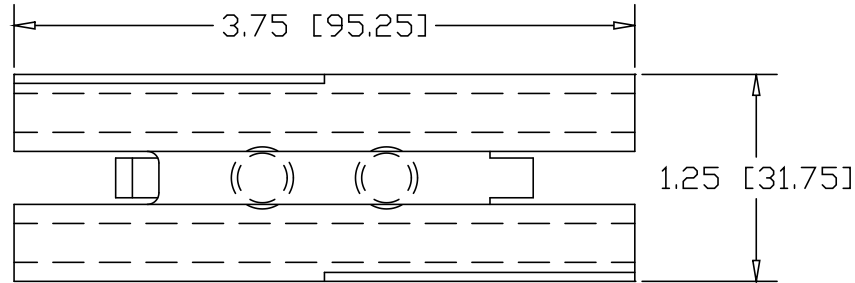
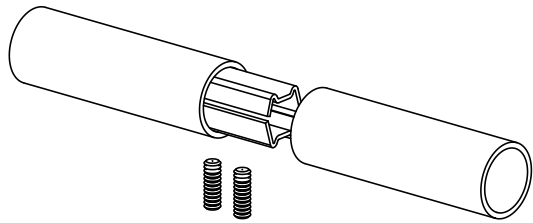
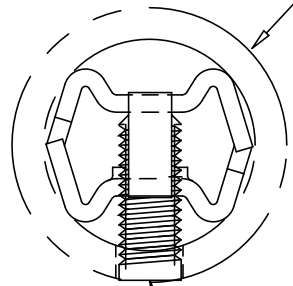


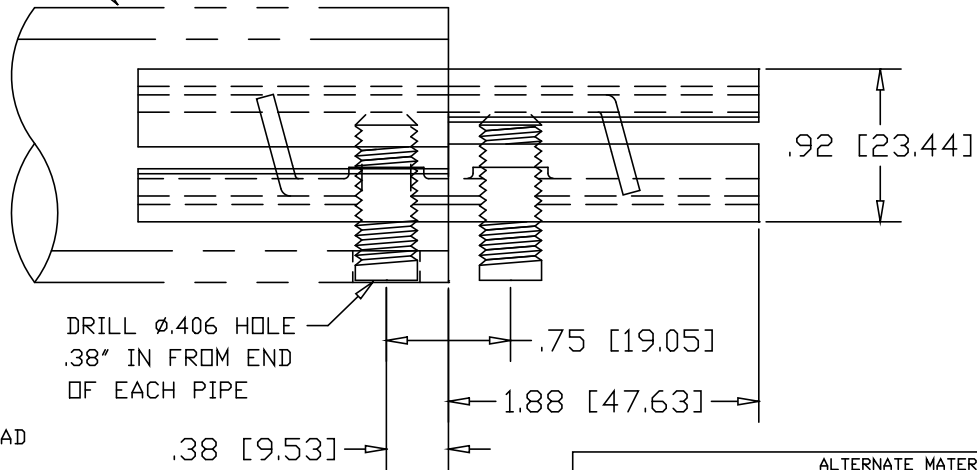
REVISIONS			
REV	DESCRIPTION	DATE	APPROVED



1-1/4" SCH80 PIPE
(1.66 OD X .191 WALL)




3/8-16 SOCKET HEAD
SET-SCREW X 1"
(2) PLACES



DRILL ϕ .406 HOLE
.38" IN FROM END
OF EACH PIPE

INCHES [MILLIMETERS]

ALTERNATE MATERIAL	PART NO.
12 GA. STEEL HOT DIP GALVANIZED	G3396
12 GA. STEEL ZINC PLATED	PL3396
.090 (3003) ALUMINUM ASTM B209	3355H

PART NAME		1-1/4" SCH80 PIPE DOUBLE-LOCK SPLICE-LOCK					
MATERIAL		12 GA. HRP&D STEEL ASTM A569					
DATE	9/20/01	 THE WAGNER COMPANIES R & B WAGNER, INC. AND J. G. BRAUN CO.					
DRAWN BY	JAH						
FINISH	MILL						
SIZE	A	WEIGHT	.38 LBS	PART NUMBER	3396	REV	