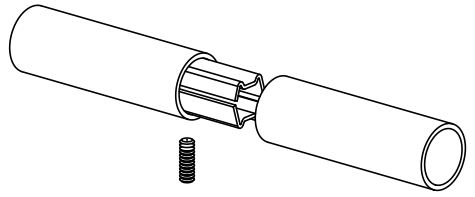
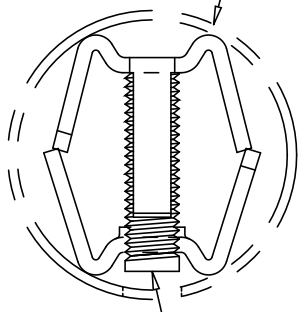


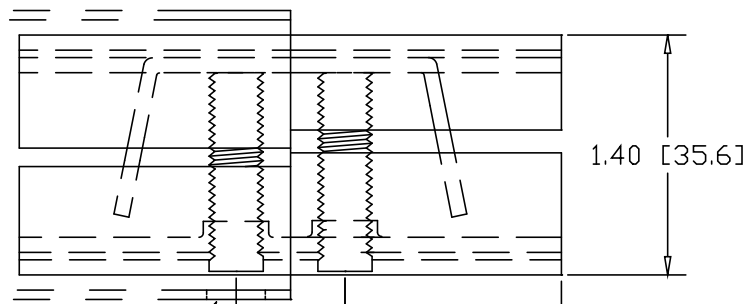
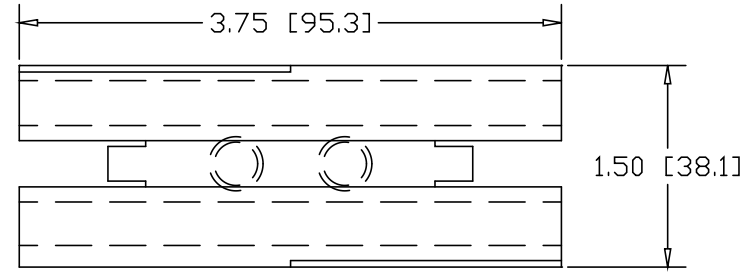
REVISIONS			
REV	DESCRIPTION	DATE	APPROVED



2.00" O.D. X .065W TUBE



3/8-16 X 1-3/8" SOCKET HEAD SET-SCREW




DRILL ϕ .406 HOLE
.38" IN FROM END

.75 [19.13]

INCHES [MILLIMETERS]

ALTERNATE MATERIAL	PART NO.
12 GA. STEEL HOT DIP GALVANIZED	G3378
12 GA. STEEL ZINC PLATED	PL3378
.090 (3003) ALUMINUM ASTM B209	3379
.090 (304) STAINLESS STEEL ASTM A240	3380

PART NAME		2.00" O.D. X .065W TUBE DOUBLE-LOCK SPLICE-LOCK					
MATERIAL		12 GA. HRP&D STEEL ASTM A569					
DATE	9/19/01	 R & B WAGNER, INC.					
DRAWN BY	JAH						
FINISH	MILL						
SIZE	A	WEIGHT	.58 LBS	PART NUMBER	3378	REV	