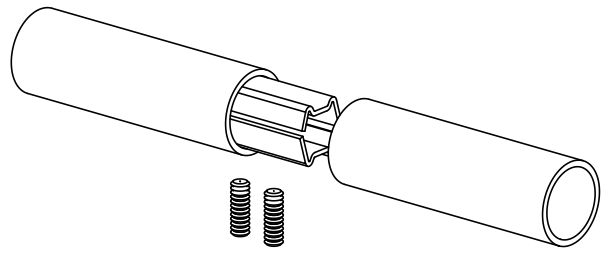
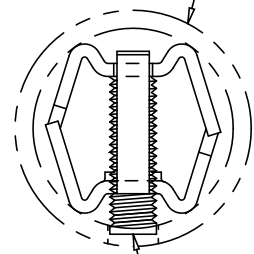


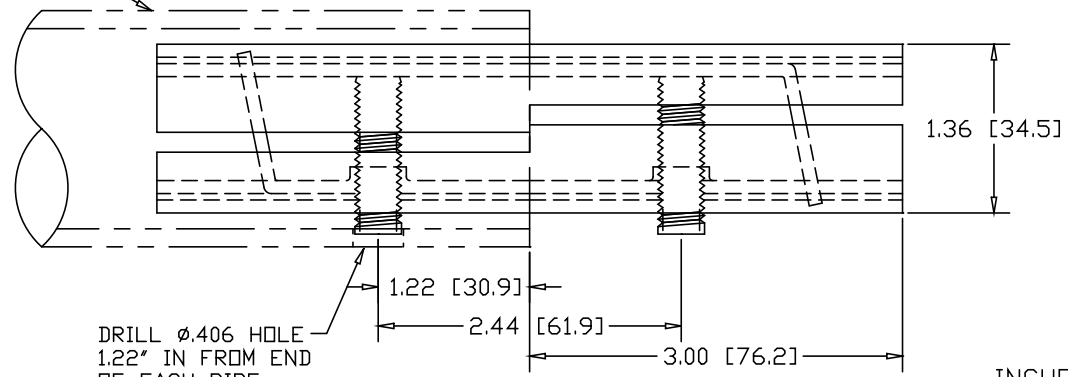
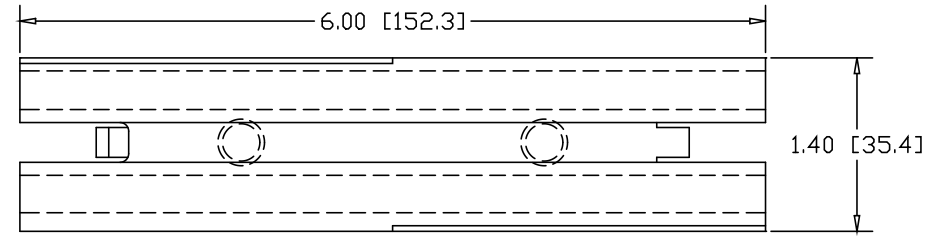
REVISIONS			
REV	DESCRIPTION	DATE	APPROVED



1-1/2" SCHEDULE 40 PIPE  
(1.90 O.D. X .145 WALL)




3/8-16  
SOCKET HEAD  
SET-SCREW  
(2) PLACES



DRILL  $\phi$ .406 HOLE  
1.22" IN FROM END  
OF EACH PIPE

INCHES [MILLIMETERS]

ALTERNATE MATERIAL	PART NO.
13 GA. STEEL HOT DIP GALVANIZED	G3368
13 GA. STEEL ZINC PLATED	PL3368
.090 (3003) ALUMINUM ASTM B209	3384
.090 (304) STAINLESS STEEL ASTM A240	3390

PART NAME		1-1/2" SCH40 DOUBLE-LOCK SPLICE-LOCK 6" LONG					
MATERIAL		13 GA. HRP&D STEEL ASTM A569					
DATE	3/22/93	 <b>R &amp; B WAGNER, INC.</b>					
DRAWN BY	RJF						
FINISH	MILL						
SIZE	A	WEIGHT	.88 LBS	PART NUMBER	3368	REV	