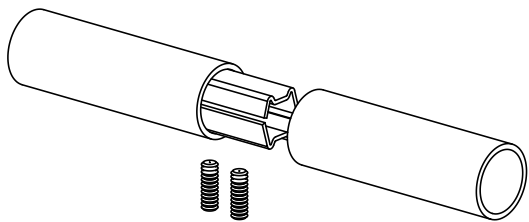
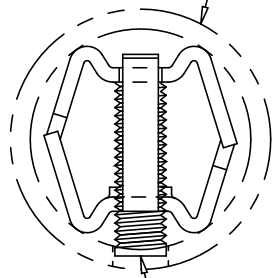


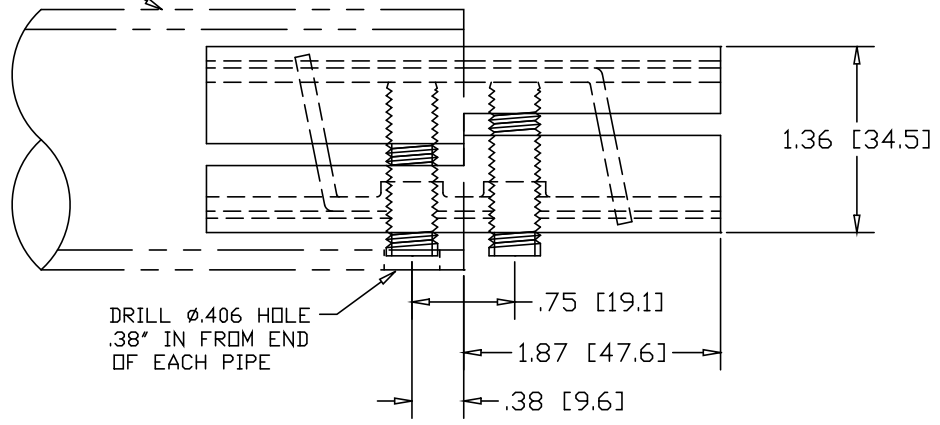
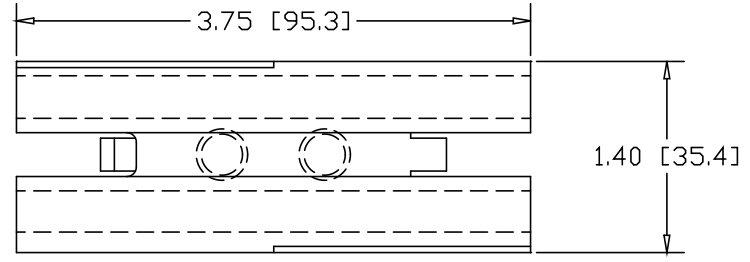
REVISIONS			
REV	DESCRIPTION	DATE	APPROVED



1-1/2" SCHEDULE 40 PIPE  
(1.90 O.D. X .145 WALL)  
OR  
2.00" O.D. .120W TUBE




3/8-16  
SOCKET HEAD  
SET-SCREW  
(2) PLACES



DRILL  $\phi$ .406 HOLE  
.38" IN FROM END  
OF EACH PIPE

INCHES [MILLIMETERS]

ALTERNATE MATERIAL	PART NO.
12 GA. STEEL HOT DIP GALVANIZED	G3358
12 GA. STEEL ZINC PLATED	PL3358
.090 (3003) ALUMINUM ASTM B209	3359
.090 304 SATINLESS STEEL ASTM A240	3361

PART NAME 1-1/2" SCH40 PIPE OR 2.00" O.D. X .120W TUBE DOUBLE-LOCK SPLICE-LOCK			
MATERIAL 12 GA. HRP&D STEEL ASTM A569			
DATE	3/22/93		R & B WAGNER, INC.
DRAWN BY	RJF		
FINISH	MILL		
SIZE	A	WEIGHT	.56 LBS
		PART NUMBER	3358
		REV	