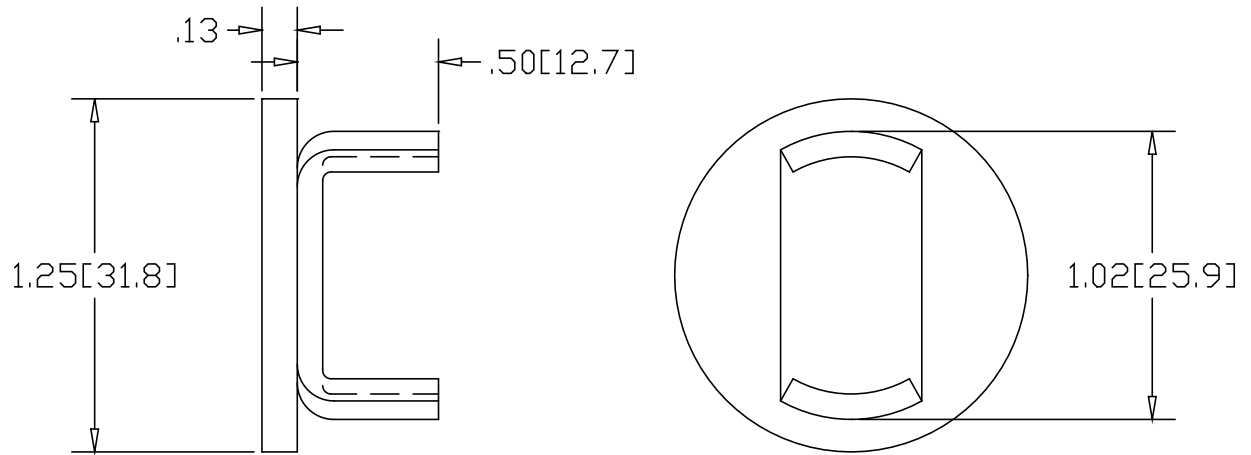



REV  
SH  
DWG NO D015E

REVISIONS			
REV	DESCRIPTION	DATE	APPROVED



INCHES [MILLIMETERS]

ALTERNATE MATERIAL	PART NUMBER
.125 (3003) ALUMINUM ASTM B209	D016E
10 GA. (304) STAINLESS STEEL ASTM A240	D017E

PART NAME				1-1/4" O.D. X .120W TUBE TYPE "E" DRIVE-ON DISK	
MATERIAL				10 GA. HRP&□ STEEL ASTM A569	
DATE	6/13/96	 <b>THE WAGNER COMPANIES</b> R & B WAGNER, INC. AND J. G. BRAUN CO.			
DRAWN BY	RJF				
FINISH	MILL		SIZE	WEIGHT	PART NUMBER
		A	.07 LBS	D015E	