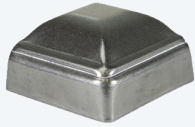


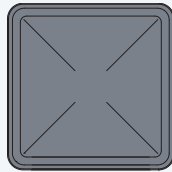
Post Cap and Square Tube End Cap

Post Cap - Pressed

Pressed, unless otherwise noted. Pressed caps have radius corners. When used with aluminum architectural tubing, you will need to relieve corners to drive on cap.

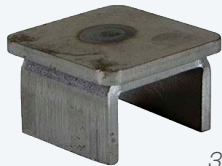


5104

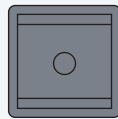
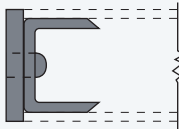


Tube Size	Steel	Pre-Galv. Steel 18Ga.	Zinc Plated Steel	Aluminum	Stainless
3/4" x 3/4"	5174			5175	5176
1" x 1"	5150			5152	5154
1 1/4" x 1/4"	5162			5163	5164
1 1/2" x 1 1/2"	5156			5158	5160
2" x 2"	5100			5101	5103
2 1/2" x 2 1/2"	5104	G5104		5105	5111
3" x 3"	5106	G5106		5107	5109
3 1/2" x 3 1/2"	5112			5113	5115
4" x 4"	5120	G5120	PL5120	5121	5123
3/4" x 1 1/2"	5170				
1" x 2"	5165			5166	5167
3" x 4"	5124				
3" x 6"	5132				
4" x 6"	5136				
5" x 5"	5147			5147A	
6" x 6"	5149			5149A	

Flush Square Tubing Drive-On Cap w/ Radiused Corners

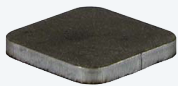


3204

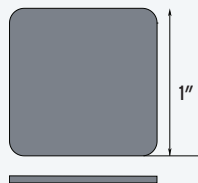


Tube Size	.073" / .083" Wall Steel	.120" Wall Steel	.120" Wall Galv. Steel	.188" Wall Steel	.125" Wall Aluminum
1" x 1"	3206	3206-11			3206-A
1 1/4" x 1/4"	3207	3207-11			3207-A
1 1/2" x 1 1/2"	3204	3204-11	G3204-11		3204-A
2" x 2"	3202	3202-11		3202-188	3202-A

Flush Square Tubing Weld-On Cap w/ Radiused Corners



3206-1



Tube Size	Thick	Steel	Aluminum
1" x 1"	1/8"	3206-1	3206-1A
1 1/4" x 1/4"	1/8"	3207-1	3207-1A
1 1/2" x 1 1/2"	1/8"	3220-D	3220-DA
2" x 2"	1/8"	3221-D	3221-DA