

# Ornamental Balls and Hemispheres



These hollow metal balls and hemispheres have a wide range of ornamental applications for the designer and fabricator. They have ample wall thickness for welding, screwing or tapping; these are not recommended for mechanical applications that have precise dimensional requirements. Steel and stainless steel balls are 11 gauge (.120" thick), and aluminum and brass balls have a 1/8" wall thickness.

Standard finish is mill with the weld seam ground flush. Wagner can furnish specific finishes, however, we will not take responsibility for customer grinding or finishing which causes distortion. Please note, Wagner does not recommend bright polishing the aluminum balls due to the porosity of the material.

Holes in the ends are required for manufacturing and may be plugged later.

Hollow Balls contain a drilled alignment hole:

- 1 1/2" diameter to 8" diameter have a 3/16" hole
- 8", 10" and 12" diameter have a 5/16" hole

Hemisphere Holes:

- 1" to 6" diameter Hemispheres have no hole
- 8", 10" and 12" diameter Hemispheres have a 5/16" hole

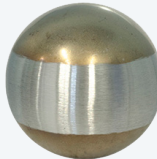
## Hollow Ball - Mill Finish



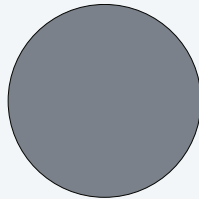
4140



4156



4142

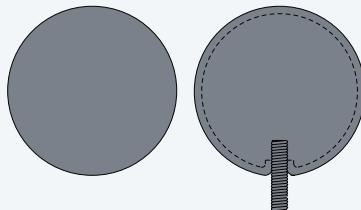


## Hollow Ball with Threaded Hole- Mill Finish

All balls noted to the right have a 3/8-16 threaded hole except for the 8" ball which has a 1/2-13 threaded hole.



4130H



Size	1010 HRPO Steel	Alloy 3003 Aluminum	304 Stainless	316 Stainless	Alloy C26000 Yellow Brass
1 1/2"	4105	4106	4107	4107.316	4108
2"	4110	4112	4114†	4114.316	4116
2 1/2"	4120	4122	4124	4124.316	4126
3"	4130	4132	4134	4134.316	4136
3 1/2"	4140	4142	4144	4144.316	4146
4"	4150	4152	4154†	4154.316	4156
4 1/2"	4155	4157	4158	4158.316	4159
5"	4160	4162	4164	4164.316	4166
6"	4170	4172	4174	4174.316	4176
8"	4180	4182	4184	4184.316	4186
10"	4185	4187	4188	4188.316	4189
12"	4190	4192	4194	4194.316	4196

Size	1010 HRPO Steel	Alloy 3003 Aluminum	304 Stainless	316 Stainless	Alloy C26000 Yellow Brass
2"	4110H	4112H	4114H	4114H.316	4116H
2 1/2"	4120H	4122H	4124H	4124H.316	4126H
3"	4130H	4132H	4134H	4134H.316	4136H
3 1/2"	4140H	4142H	4144H	4144H.316	4146H
4"	4150H	4152H	4154H	4154H.316	4156H
4 1/2"	4155H	4157H	4158H	4158H.316	
5"	4160H	4162H	4164H	4164H.316	4166H
6"	4170H	4172H	4174H	4174H.316	4176H
8"	4180H	4182H	4184H	4184H.316	4186H

† Available in satin finish



STANDARD PRODUCTS  
RAILING SYSTEMS  
LONG LENGTHS  
CUSTOM SERVICES  
INDEX