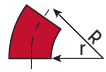


Square Tube Flush Weld Elbows

Stock **Square Tubing Elbows** have a .083" wall **Tubing** except as noted. Contact **Wagner** regarding availability of other radii and wall thicknesses - rfq@mailwagner.com.

r = Inside Radius
 R = Center Line Radius
 C-C = Center to Center Diameter



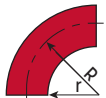
35° Elbow

Square Tube	r	R	STEEL
1.50"	3 ³ / ₄ "	4 ¹ / ₂ "	6360
2.00"	7"	8"	6380 [†]



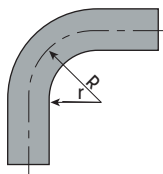
45° Elbow

Square Tube	r	R	STEEL
1.25"	3 ¹ / ₈ "	3 ³ / ₄ "	6332
1.50"	3 ³ / ₄ "	4 ¹ / ₂ "	6362
2.00"	7"	8"	6382 [†]



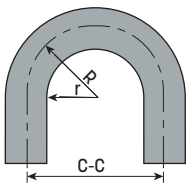
90° Elbow

Square Tube	r	R	STEEL
1.00"	2 ¹ / ₂ "	3"	6306
1.25"	3 ¹ / ₈ "	3 ³ / ₄ "	6336
1.50"	3 ³ / ₄ "	4 ¹ / ₂ "	6366
2.00"	7"	8"	6386 [†]



90° Elbow with Two 2" Tangents

Square Tube	r	R	STEEL	ALUMINUM
1.00"	2 ¹ / ₂ "	3"	6308	6408
1.25"	3 ¹ / ₈ "	3 ³ / ₄ "	6338	
1.50"	3 ³ / ₄ "	4 ¹ / ₂ "	6368	
2.00"	7"	8"	6388 [†]	



180° Elbow with Two 2" Tangents

Square Tube	r	R	C-C	STEEL	ALUMINUM
1.00"	2 ¹ / ₂ "	3"	6"	6313 [Ⓟ]	6413
1.25"	3 ¹ / ₈ "	3 ³ / ₄ "	7 ¹ / ₂ "	6343 [Ⓟ]	
1.50"	3 ³ / ₄ "	4 ¹ / ₂ "	9"	6373 [Ⓟ]	
2.00"	7"	8"	16"	6393 [Ⓟ]	

[Ⓟ] Available with two untrimmed tangents.
 Add a **B** at the end of the number when ordering

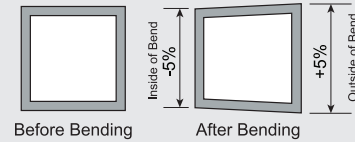
STEEL A53, A500
 ALUMINUM 6063
 Upon request:
 STAINLESS STEEL Type 304

Deformity Issues with Stock Bends

The process of bending **Pipe** and **Tube** results in unavoidable deformation.

In **Square** and **Rectangular** Tube sections, the **Tube** will tend towards a trapezoidal deformation. The deformation may be as much as -5% on the inside of the bend and +5% on the outside of the bend.

This may be avoided by ordering **Elbows with Tangents** since the tangent sections will be unaffected by the bending process.

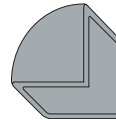


Square Tube Flush Weld Corner

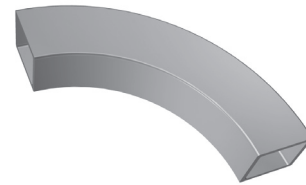
No Miter - No Sharp Corners

This cost-cutting corner simplifies fit-up and shortens fabrication. Simply square cut your **Tubing**.

Radius equals the tube size. Not recommended for **Square Corner Extruded Tube**.



Square Tube	Wall Thick.	STEEL	ALLOY 304 STAINLESS
1.00"	.080"	9210	9212
1.25"	.080"	9215	9217
1.50"	.080"	9220	9222
2.00"	.080"	9225	9227
4.00"	.104"	3900136B	



Elbows are supplied with a mill finish. They are also available galvanized, zinc plated, anodized or polished to a satin or bright finish.

[†] Denotes .120" wall.