

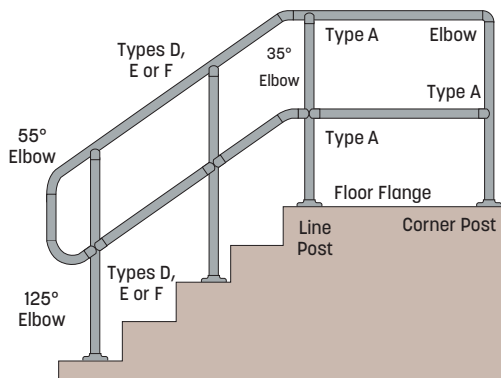
Coped Drive-On Connectors

No More Pipe Coping Or Notching Necessary

Simple to use and weld on. These money-saving **Connectors** are used with **Pipe** sections to form a railing system. Unique drive-on and weld design eliminates **Pipe** coping and saves time spent on cutting and alignment.

Use **Type A Connectors** for ramps. **32° Type B Bevel Tees** may be used for 30° to 32° slopes; **36° Type D Bevel Tees** may be used for 36° to 40° slopes; and **45° Type E Bevel Tees** may be used for 42° to 48° slopes.

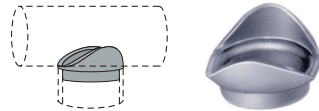
For 1 1/4", 1 1/2" and 2" nominal **Pipe**. These **Connectors** are supplied with a mill finish.



Made in MILWAUKEE

90° Tee Connector - Type A

Pipe Size	Tube OD	SCH. 40 STEEL	SCH. 40 ALUMINUM	304 SCH. 40 STAINLESS
1 1/4"	1.60"	1822	1823	1822S
1 1/2"	1.90"	1834	1835	1834S
2"	2.375"	1896	1906	



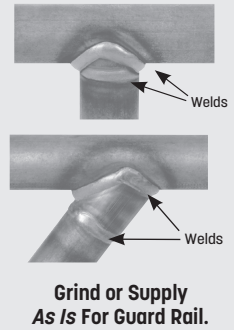
Corner Tee - Type B

Pipe Size	Tube OD	SCH. 40 STEEL
1 1/4"	1.60"	1826
1 1/2"	1.90"	1838

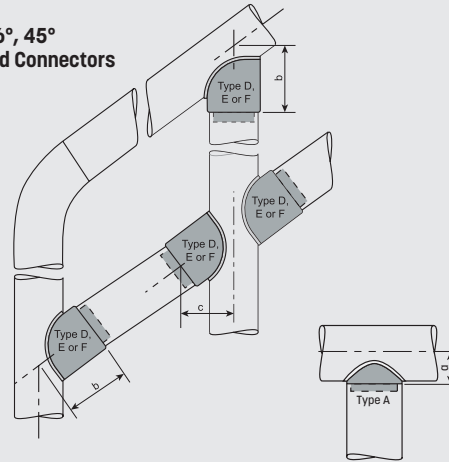


To Use:

1. Cut **Pipe** to required length.
2. Remove burr.
3. Drive on **Coped Connector**. To drive on 90° **Coped Welding Connectors** into the end of the **Pipe**, place a bar into the coped end and hammer **Connector** down tight. For **Bevel Connectors**, insert into the **Pipe** end, place round Steel plug into **Connector** and drive on tight.
4. Weld and grind smooth.



32°, 36°, 45° Beveled Connectors



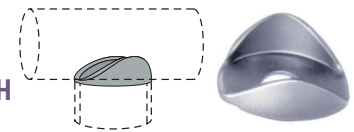
Dimensions to Center Line

Pipe Size	90° a	32° b	32° c	36° b	36° c	45° b	45° c
1 1/4"	1.00"	2.31"	1.96"	2.56"	2.07"	2.31"	1.63"
1 1/2"	1.12"	2.69"	2.28"	2.69"	2.18"	2.69"	1.90"
2"	1.31"						

90° Tee Connector - Type H

For use with **Extra Heavy Pipe**.

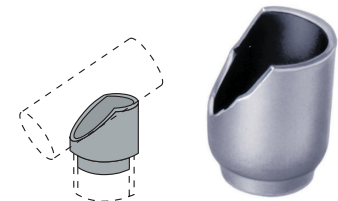
Pipe Size	Tube OD	SCH. 40 STEEL	SCH. 40 ALUMINUM	304 SCH. 40 STAINLESS
1 1/4"	1.60"	3535	1911	1921
1 1/2"	1.90"	3540	1912	1922
2"	2.375"	1902	1913	1923



Bevel Tee - Types D, E And F

For use in 32° (Type F), 36° (Type D) and 45° (Type E) connections between posts and rails.

Pipe Size	Tube OD	Bevel	304 SCH. 40 STEEL
1 1/4"	1.60"	32°	1873
1 1/4"	1.60"	36°	1870
1 1/4"	1.60"	45°	1872
1 1/2"	1.90"	32°	1883
1 1/2"	1.90"	36°	1880
1 1/2"	1.90"	45°	1882



NUMBERS IN BOLD TYPE are typically in stock. Other items may not be available for immediate shipment or are made-to-order - requiring a minimum quantity and a longer lead time. Visit shop.wagnercompanies.com for availability.