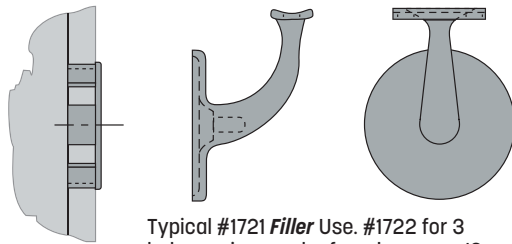
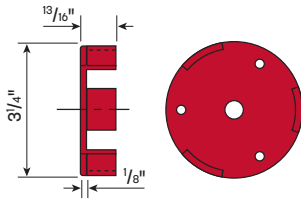


Bracket Wall Fillers

These optional **Fillers** are for plaster walls or wall board. The fillers prevent over tightening of matching **Handrail Brackets** which may result in cracking the drywall.



Typical #1721 **Filler** Use. #1722 for 3 hole version can be found on page 13.

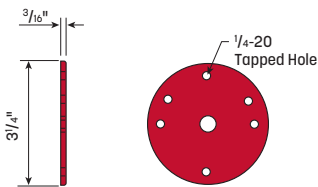
Filler

For use with one hole or three hole **Style U Brackets** only.

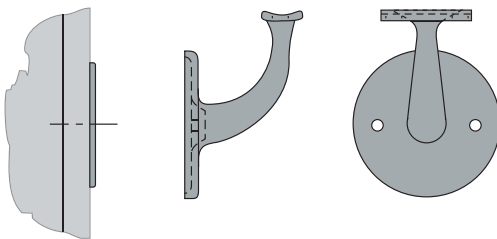
1721 Filler has one $7/16$ " diameter center hole, and three untapped holes. For use with $5/8$ " drywall.

1722 Filler has one $7/16$ " diameter center hole, and three tapped holes with matching $1/4$ " x $3/8$ " **Round Head Screws**. For use with $5/8$ " drywall.

Center Hole	STEEL	ZINC PLATED STEEL	FOR USE IN
$7/16$ "	1721	PL1721	Plaster
$7/16$ "	1722		Drywall



B1416



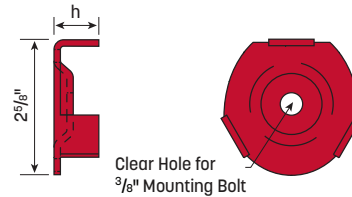
Typical **Anchor Plate** Use

Anchor Plate

For use with **Style U Brackets** only. Six tapped holes and $7/16$ " center hole with $1/4$ " **Round Head Bolts**.

Center Hole	STEEL
$7/16$ "	B1416

Available with one clear center hole for $3/8$ " **Mounting Bolt**, or one center hole and three tapped clear holes for $1/4$ " **Mounting Bolts**. Use **Plated Steel Fillers** with Aluminum and Bronze **Brackets**. Call for availability.

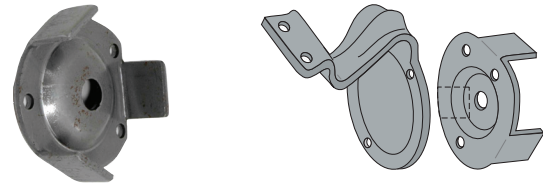


Style A Filler

For use with one hole **Bracket**. These **Fillers** are used with **Style B** and $1/4$ " **Formed Handrail Brackets** shown on pages 6-9.

h	STEEL
$5/8$ "	3525B
$7/8$ "	3525

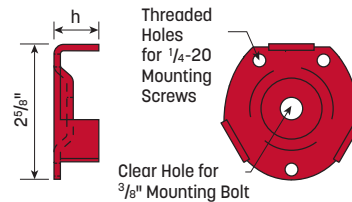
Mounting Bolt not included.



Style B Filler

For use with three hole **Bracket**.

Includes three $1/4$ " x $3/8$ " **Round Head Screws**.



h	STEEL
$7/8$ "	4579B
$5/8$ "	4579

Mounting Bolt not included.



Adapter

Permits the **Vertical Mount** and **Post Mount Brackets** to be used with **Pipe** and **Tubing**. Satin finish.

Hole	For OD	a	ALUMINUM	304 STAINLESS	BRASS
$7/16$ "	1.50"	$1/4$ "	AA1507	AS1507	AB1507
$7/16$ "	1.66"	$1/4$ "		AS1607	
$7/16$ "	1.90"	$1/4$ "	AA1907	AS1907	AB1907
$7/16$ "	2.00"	$1/4$ "	AA2007	AS2007	AB2007
$7/16$ "	1.90"	$1/2$ "		AS1905	

NUMBERS IN BOLD TYPE are typically in stock. Other items may not be available for immediate shipment or are made-to-order - requiring a minimum quantity and a longer lead time. Visit shop.wagnercompanies.com for availability.