

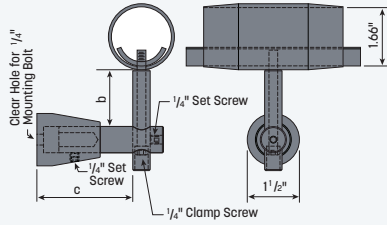
Slip-Fit™ Brackets

Post Mount Slip-Fit™ Bracket

With vertical and horizontal adjustment. Use AS1905 adapter for use with 1 1/2" pipe post.



WR3166SFP



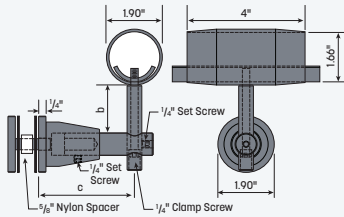
b	c	316 Satin Stainless
1 1/2" to 2"	2 3/8" to 3 1/4"	WR3166SFP

Glass Mount Slip-Fit™ Bracket

With vertical and horizontal adjustment. Use with 1.66" OD handrail only with a wall thickness between .065" to .140". For use with .44" to .75" glass.



GR3166SF



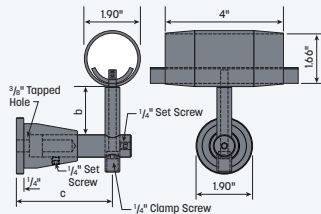
b	c	316 Satin Stainless
1 1/2" to 2"	2 3/8" to 3 1/4"	GR3166SF

Wall Mount Slip-Fit™ Bracket

With vertical and horizontal adjustment. Use with 1.66" OD handrail only with a wall thickness between .065" to .140".



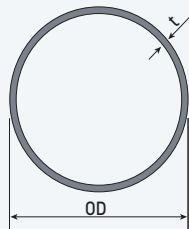
WR3166SFW



b	c	316 Satin Stainless
1 1/2" to 2"	2 3/8" to 3 1/4"	WR3166SFW

Stainless Steel Pipe

Type 304 stainless steel with satin finish.



Pipe Size	Sch.	OD	t	6' Length	18' Length
1 1/4"	5	1.66"	.065"	P763.4-6	P763.4
1 1/4"	10	1.66"	.109"	P3166104.4-6	P3166104.4
1 1/4"	40	1.66"	.140"	P792.4-6	P792.4*

See WagnerCompanies.com/catalog/page-22 for Slip-Fit™ install instructions.

* Denotes 21' length

Learn more or order at WagnerCompanies.com

