

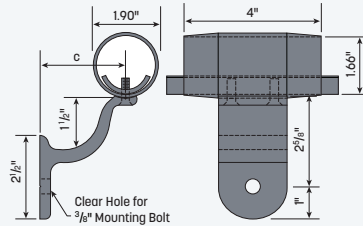
# Slip-Fit™ Brackets

- US Patented
- Steel 1006–1010, zinc plated
- Stainless steel type 304, satin finish
- Aluminum 6063, mill finish
- For use with 1 1/4" schedule 5, 10 or 40 pipe (1.66" OD with .065" to .140" wall thickness) only

## Extruded Wall Mount Slip-Fit™ Bracket



ER8104SF



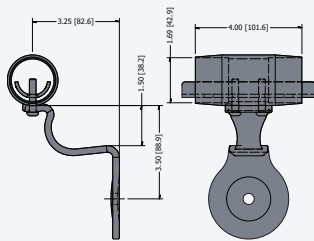
c	Aluminum
2 1/2"	ER8104SF
3 1/4"	ER8004SF

## Formed Wall Mount Slip-Fit™ Bracket

Dimensioned to Meet NFPA, ICC, ANSI A117.1 and 2010 ADA.



33251RSF

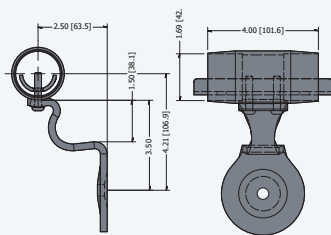


Material	Part Number
Zinc Plated Steel	13251RSF.PL
304 Satin Stainless Steel	33251RSF

## Formed Wall Mount Slip-Fit™ Bracket



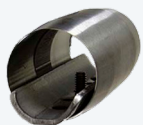
3251RSF



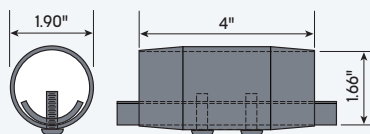
Material	Part Number
Zinc Plated Steel	1251RSF.PL
304 Satin Stainless Steel	3251RSF

## Slip-Fit™ Splice Connector

Designed for the alignment of handrail sections and as expansion joints. Most effective as a joint stiffener when used within 12" of a welded post on handrail bracket. These are not to be used in a post. US Patented. Use with 1.66" OD handrail only with a wall thickness between .059" to .140".



WR1166SF.PL



Material	Part Number
Zinc Plated Steel	WR1166SF.PL
304 Satin Stainless Steel	WR3166SF