

# Brass and Stainless Steel Railing Components

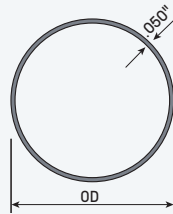
## Round Tubing

- .050" wall thickness
- Satin or bright polished finish

Note: We are unable to bend .050" wall tubing. We will quote .125" wall brass with a minimum 2.75" center line radius.



T3970.4L



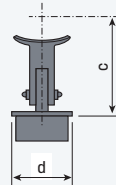
Tube OD	Length	304 Stainless*	304 Polished Stainless	C270 Polished Brass
1.50"	4'	T3774.4L-4	T3774-4	T5062-4
1.50"	6'	T3774.4L-6	T3774-6	T5062-6
1.50"	8'	T3774.4L-8	T3774-8	T5062-8
1.50"	12'			T5062
1.50"	20'	T3774.4L	T3374	
2.00"	4'	T3970.4L-4		T5122-4
2.00"	6'	T3970.4L-6	T3970-6	T5122-6
2.00"	8'	T3970.4L-8	T3970-8	T5122-8
2.00"	12'			T5122
2.00"	20'	T3970.4L	T3970	

## Adjustable Saddle Bracket

Adjustable brackets may be mounted to the top of posts or at ends of mid rails to adjust railing to varying stair angles.



141539

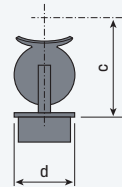


Tube OD	d	c	Polished Brass
1.50"	1 1/2"	2 7/8"	141539
2.00"	2"	3 1/8"	142039

## Ball Adjustable Saddle Bracket



152038



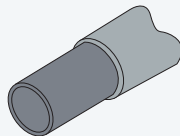
Tube OD	d	c	Polished Stainless	Polished Brass
1.50"	1 1/2"	3 5/8"	151538	
2.00"	2"	2 7/8"	152038	142038

## Steel Reinforcing Insert

Place this Steel Insert into your brass or stainless steel tubing for added strength in posts, foot rails or as required. When used in foot rails, drill pilot holes to accept screws supplied with fittings.



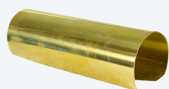
T1269-4



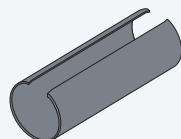
Tube OD	Insert OD	4' Length Steel	6' Length Steel	8' Length Steel	20' Length Steel
1.50"	1.375"	T1269-4	T1269-6	T1269-8	T1269
2.00"	1.875"	T1360-4	T1360-6	T1360-8	T1360

## Internal Splice

Insert into brass or stainless steel tube with Lido-Weld™ Metal Adhesive for tube splice connections. Splice should be within 6" of a post or bracket connection.



14621-2



Tube OD	Wall Thick.	Length	Brass
1.50"	.50"	6"	14621-15
2.00"	.50"	6"	14621-2

\*Longitudinal satin



STANDARD PRODUCTS

RAILING SYSTEMS

LONG LENGTHS

CUSTOM SERVICES

INDEX