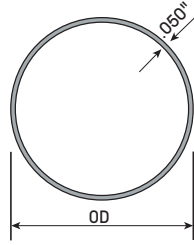


### Round Tubing

.050" Wall Thickness,  
Satin or Bright Polished Finish.

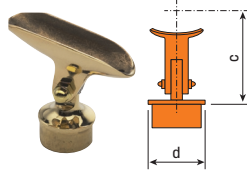


Tube OD	Length	TYPE 304 SATIN STAINLESS	TYPE 304 POLISHED STAINLESS	C270 SATIN BRASS	C270 POLISHED BRASS
1.50"	4'	T3774.4L-4	T3774-4		T5062-4
1.50"	6'	T3774.4L-6	T3774-6		T5062-6
1.50"	8'	T3774.4L-8	T3774-8	T5062.4-8	T5062-8
1.50"	12'			T5062.4	T5062
1.50"	20'	T3774.4L	T3774		
2.00"	4'	T3970.4L-4		T5122.4-4	T5122-4
2.00"	6'	T3970.4L-6	T3970-6		T5122-6
2.00"	8'	T3970.4L-8	T3970-8		T5122-8
2.00"	12'			T5122.4	T5122
2.00"	20'	T3970.4L	T3970		

Note: We are unable to bend .050" wall *Tubing*. We will quote .125" wall Brass with a minimum 2.75" center line radius.

### Adjustable Saddle Bracket

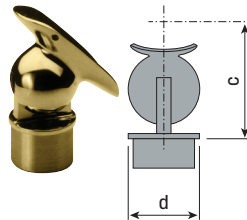
*Adjustable Brackets* may be mounted to the top of *Posts* or at ends of mid *Rails* to adjust *Railing* to varying stair angles.



Tube OD	d	c	POLISHED BRASS
1.50"	1 1/2"	2 7/8"	141539
2.00"	2"	3 1/8"	142039

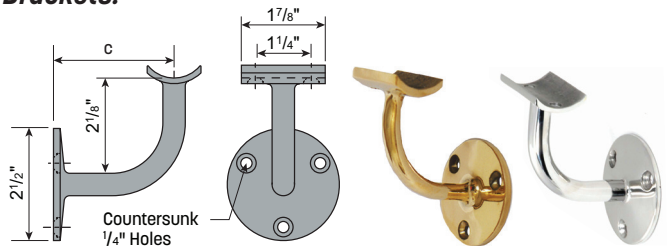
### Ball Adjustable Saddle Bracket

Tube OD	d	c	POLISHED STAINLESS	POLISHED BRASS
1.50"	1 1/2"	3 5/8"	151538	
2.00"	2"	2 7/8"	152038	142038



## Cast Wall Mounting Brackets for Tube

Saddle fits 1.50" and 2.00" OD Stainless Steel and Brass *Tube*. Refer to pages 6 - 26 for other available *Brackets*.



Tube OD	c	SATIN STAINLESS	POLISHED STAINLESS	POLISHED BRASS
1.50"	2 1/2"	151534.4	151534	
1.50"	2 5/8"			141534
2.00"	2 3/4"	152034.4	152034	
2.00"	2 5/8"			142034

Please review our quality expectations statement on page 219.

### LOCTITE® Adhesive and Primer

A single component, structural *Adhesive* which may be used as an alternative to welding, soldering or *Set Screwing* Brass and Stainless Steel *Fittings* and *Tubing*. Not for use with Aluminum. *Primer* is recommended with Stainless Steel components for the purpose of speeding up cure time.

Approximately 10-15 joints are typical per container.

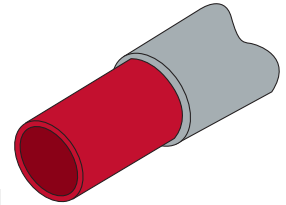
Adhesive	1.10 Ounces	14664
Primer	0.88 Ounces	14666



See page 99 for *Lido-Lustre™ Polish Cream*.

### Steel Reinforcing Insert

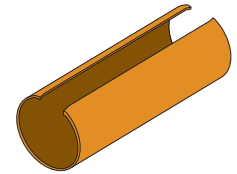
Insert this *Steel Insert* into your Brass or Stainless Steel *Tubing* for added strength in *Posts*, *Foot Rails* or as required. When used in *Foot Rails*, drill pilot holes to accept *Screws* supplied with *Fittings*.



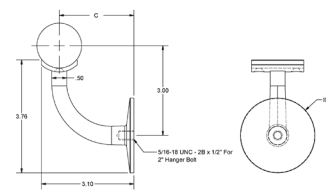
Tube OD	Insert OD	4' LENGTH STEEL	6' LENGTH STEEL	8' LENGTH STEEL	20' LENGTH STEEL
1.50"	1.375"	T1269-4	T1269-6	T1269-8	T1269
2.00"	1.875"	T1360-4	T1360-6	T1360-8	T1360

### Internal Splice

Insert into Brass or Stainless Steel *Tube* with *Lido-Weld Adhesive* for *Tube Splice* connections. *Splice* should be within 6" of a *Post* or *Bracket* connection.



Tube OD	Length	BRASS
1.50"	6"	14621-15
2.00"	6"	14621-2



5/16" *Hanger Bolt* is included.

Tube OD	c	POLISHED BRASS
1.50"	2 1/2"	141535
2.00"	2 3/4"	142035



STANDARD PRODUCTS

RAILING SYSTEMS

TRADITIONAL RAILINGS

CUSTOM SERVICES

APPENDIX