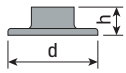


Flanges

Except for the **Steel Flange with Insert** below, these **Flanges** are not recommended for structural use. For other available **Flanges** refer to pages 52 - 61.



Wall Flange



Tube OD	d	h	316 SATIN STAINLESS	304 POLISHED STAINLESS	POLISHED BRASS
1.50"	3"	1 1/4"	151574-3.4	151574-3	141574-3



Floor Flange

Tube OD	d	h	SATIN STAINLESS	POLISHED STAINLESS	POLISHED BRASS
1.50"	4"	1 1/4"			141574-4
2.00"	4"	1 1/4"	152074-4.4	152074-4	142074-4



Floor Flange

Tube OD	d	h	SATIN STAINLESS	POLISHED STAINLESS	POLISHED BRASS
2.00"	5"	1 3/8"	152074-5.4	152074-5	142074-5



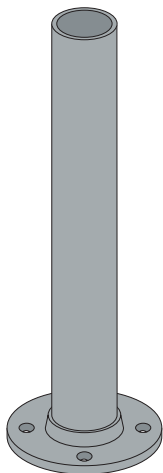
Flange Canopy

Tube OD	d	h	POLISHED BRASS
1.50"	4"	1 1/2"	141580
2.00"	5"	1 1/2"	142080



Flange Canopy

Tube OD	d	h	SATIN STAINLESS	POLISHED STAINLESS
2.00"	5 1/8"	5/8"	152080.4	152080

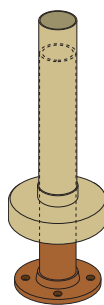


Steel Flange with Insert

For use with 1.50" and 2.00" **Tube** with a .050" wall.

Recommended for surface mounting of Brass or Stainless Steel **Railing Posts** when greater strength is required. **Steel Insert** is threaded into the **Steel Flange**.

- Use **Anchor Bolts** to bolt the **Flange** to floor surface. Four holes are 3/8" - unthreaded.
- Slide your **Tube Post** over the **Steel Insert**.
- Slide the **Flange Canopy** - shown above - onto the **Post** to cover the **Steel Flange**.
- Use **Screws** or **Adhesive** to lock the **Insert, Flange** and **Tube** in place.



Tube OD	Flange Diam.	Insert Height	STEEL
1.50"	4"	12"	141541
2.00"	5"	12"	142541

Please review our quality expectations statement on page 219.



Cut Flange

Tube OD	d	h	SATIN STAINLESS	POLISHED STAINLESS	POLISHED BRASS
1.50"	3"	2"		151575	141575
2.00"	4"	2 1/2"	152075.4	152075	142075



End Post

Tube OD	a	b	SATIN STAINLESS	POLISHED STAINLESS	POLISHED BRASS
1.50"	2 5/16"	2 7/16"	151530.4	151530	141530
2.00"	2 1/2"	3 1/4"			142030



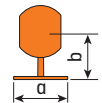
Center Post

Tube OD	a	b	SATIN STAINLESS	POLISHED STAINLESS	POLISHED BRASS
1.50"	2 5/16"	2 7/16"	151531.4	151531	141531
2.00"	2 1/2"	3 1/4"	152031.4	152031	142031



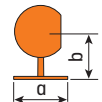
Ball Center Post

Tube OD	a	b	POLISHED BRASS
1.50"	2 15/16"	2 3/4"	141533
2.00"	3 3/8"	3"	142033



Ball End Post

Tube OD	a	b	POLISHED BRASS
1.50"	2 15/16"	2 3/4"	141532
2.00"	3 3/8"	3"	142032



Embedded Post Assembly

- Provide holes or **Sleeves** - see page 63 - a minimum 1/2" larger than the **Post OD**.
- Minimum depth: 4" - 5" to 6" preferred.
- 3/2" minimum from center of **Post** to edge of slab.
- 1/2" minimum from edge of hole to edge of slab.
- 1" minimum grout pad.
- Insert optional **Steel Reinforcing Insert** into **Tube Post**.
- Set posts with **Rockite®** or **Kwixset®** - see page 63.
- Use **weep holes** for exterior applications.

