

Outside of Post Mount Non-Swaged



The Invisiware® Receiver with Push-Lock™ Stud combination is an exposed, swageless, tensioning, through-the-post-mounted fitting that is suitable for level runs only.

The Invisiware Receiver with Push-Lock Stud can be used with any fitting on the opposite end of the run. This fitting requires that a minimum of 2-1/2" of clearance exists on the back side of the end post to install the receiver into the post. The receiver is furnished with a Delrin® washer that is installed between the shoulder of the fitting and the end post to protect the surface of the finish of the end post as tension is applied. The cable attaches to the Push-Lock Stud fitting via our Push-Lock locking wedge system which requires no special tools.

We do not recommend this fitting being installed in pitched applications because it would require drilling all of the holes in the end post at an angle.

For wood posts, also order CR716SAE (page 165) Stainless Steel Washer.

Easy to Install

Push-Lock™ studs are designed for use with 1x19 left hand lay strand only. Push the cable into the Push-Lock Swageless Stud, turning the cable to the right while inserting, where it will be securely held inside the fitting. The receiver is female-threaded to accept the male-threaded end of the fitting. The head of the receiver is broached for an Allen wrench. To tension the cable, use an Allen wrench to rotate the receiver around the threaded end of the stud.

Push-Lock™ Fittings - Swageless Stud



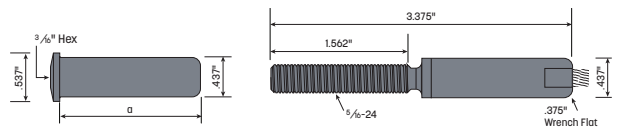
Push-Lock™ Swageless Studs are made of type 316 stainless steel with the exception of internal components that are made of other types of stainless steel.

Note: Designed for use with 1x19 left hand lay strand only.



CRPLST4

Cable	Any Frame
1/8"	CRPLST4
3/16"	CRPLST6



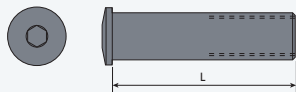
Invisiware® Receivers

Made of type 316 stainless steel. Order one swageless stud and one receiver per length of cable.

Cable	Use With Swageless Stud	L=1.56"	L=1.81"	L=2.03"	L=2.30"	L=2.40"	L=2.53"	L=3.03"	L=3.56"
1/8"	CRPLST4	CRR612	CRR622	CRR632	CRR342	CRR672	CRR682	CRR652	CRR662
3/16"	CRPLST6	CRR612	CRR622	CRR632	CRR342	CRR672	CRR682	CRR652	CRR662



CRR612



See WagnerCompanies.com/catalog/page-152 for information on cable installation.

Learn more or order at WagnerCompanies.com

