

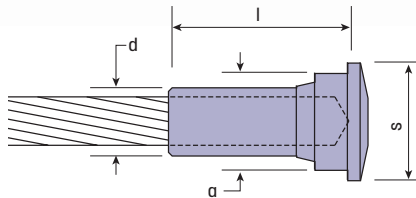


Fixed Ends

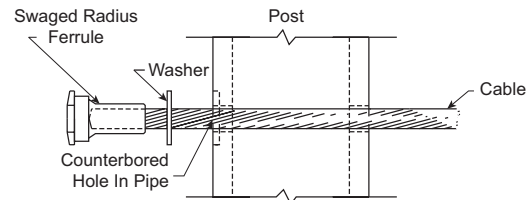
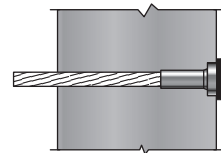
Save money by using these less expensive fittings where you do not need a tensioner on both ends of your cable run.

Where to use these fittings

Often you do not need a tensioning device on both ends of your cable. This applies where your run is relatively short or where you are cutting and swaging the cables on site (and can get more precise measurements than having the cables pre-cut by Wagner).



Note: Needs swaging



Invisiware® Radius Ferrule

Often used in combination with the Invisiware receiver (page 139), **this fitting is also hidden inside the end post** with only the head exposed on the outside of the post. When installed, it looks the same as the Invisiware receiver except it costs much less.

Invisiware radius ferrules are used with pipe and with round, square or rectangular metal tubing. Pipe ends are counterbored, so the full perimeter of the head rests on a flat surface in the pipe. The head rests on the outside wall of a flat-sided metal post. A plastic washer is included and acts as a scratch-resistant barrier between the head of the fitting and the metal post.

For use in wood, the Invisiware radius ferrule can rest against the outside of the post or the post can be counterbored with the radius ferrule recessed in the post. For wood applications, also order stainless steel washer **CR716SAE** (page 145).

Note: Can only be used on one side.

Cable Size	l*	d*	s	a	STAINLESS
1/8"	.750"	.250"	.537"	.437"	CRRF4
3/16"	.750"	.250"	.537"	.437"	CRRF6
1/4"	1.00"	.375"	.646"	.531"	CRRF8
5/16"	1.00"	.500"	.865"	.687"	CRRF10
3/8"	1.00"	.500"	.865"	.687"	CRRF12

*After Swaging

NUMBERS IN BOLD TYPE are typically in stock. Other items may not be available for immediate shipment or are made-to-order - requiring a minimum quantity and a longer lead time. Visit shop.wagnercompanies.com for availability.