

# Polishing Supplies

## Replacement Parts

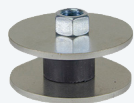
During normal use, the finishing pulley disk will develop sharpened edges. Replace these disks immediately upon noticing any hazardous edges.



PP1C

Description	Part Number
Hub	PP1B
Rubber Ring	PP1C
6 Disks and Rings	PP1D

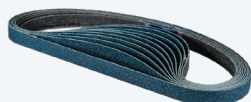
## Polishing Pully



PP1

Description	Part Number
Polishing Pully	PP1

## Polishing Belts



PP80GR

Description	1/2" x 24" Packages of 10
50 Grit Zirconium	PP50GRZIR
50 Grit Ceramic	PP50GRRLPC
80 Grit Aluminum Oxide	PP80GR
80 Grit Zirconium	PP80GRZIR
120 Grit Aluminum Oxide	PP120GR
120 Grit Zirconium	PP120GRZIR
180 Grit Aluminum Oxide	PP180GR
240 Grit Aluminum Oxide	PP240GR
320 Grit Aluminum Oxide	PP320GR
400 Grit Aluminum Oxide	PP400GR
Coarse Non-Woven Abrasive	PPCRS
Medium Non-Woven Abrasive	PPMED
Fine Non-Woven Abrasive	PPFINE

## Lido-Lustre™ Metal Polished Cream

May be used to remove tarnish from brass, bronze, aluminum and stainless steel. Leaves a silicone film for longer protection.



14663

Description	Part Number
6.33 oz Tube	14663

## Clear Touch Up Paint - For Clear Anodized Finishes



PP204RI-CL

Description	Part Number
Aerosol	PP204RI-CL