

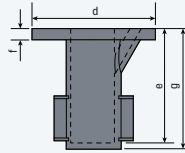
Kee Klamp® Fittings

Ground Socket

For use when uprights are required to be removable.



KK66-7

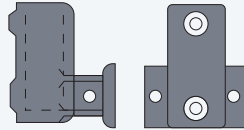


Pipe Size	OD Size	d	e	f	g	Malleable Iron
1"	1.315"	5.00"	4.84"	0.43"	4.53"	KK66-6
1 1/4"	1.66"	5.51"	5.35"	0.43"	5.00"	KK66-7
1 1/2"	1.90"	5.51"	5.35"	0.43"	5.00"	KK66-8

Horizontal Base



KK65-6



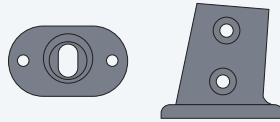
Pipe Size	OD Size	d	Malleable Iron
1"	1.315"	0.55"	KK65-6

Angle Flange

For ramps where angle from vertical is between 3° and 11°.



KK67-8



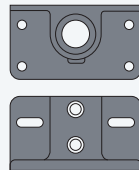
Pipe Size	OD Size	Hole Dia	Malleable Iron
1 1/2"	1.66"	0.55"	KK67-8

Flange with Toeboard Adapter

Allows attachment of a kick plate to the base.



KK69-7

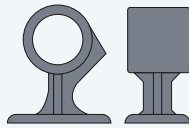


Pipe Size	OD Size	Malleable Iron
1 1/4"	1.66"	KK69-7
1 1/2"	1.90"	KK69-8

Rail Support



KK70-8



Pipe Size	OD Size	Malleable Iron
1 1/2"	1.90"	KK70-8

PGR Three Socket Tee



KKP90-8

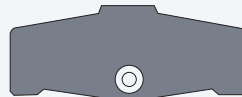


Pipe Size	OD Size	Malleable Iron
1 1/2"	1.90"	KKP90-8

PGR Two Socket Cross



KKP91-8



Pipe Size	OD Size	Malleable Iron
1 1/2"	1.90"	KKP91-8