

**Post Style Options:**



Round



Square

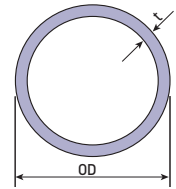


Blade

**Note:** When using tempered glass, holes must be drilled prior to tempering. Post spacing is 42" on center.

**Stainless Steel Pipe**

Type 304 and 316  
Satin Finish  
20' Random Lengths, Except as Noted  
† Denotes 18' Lengths



Pipe Size	Sch.	OD	ID	t	lb/ft	TYPE 316 SATIN STAINLESS	TYPE 304 SATIN STAINLESS
1 1/4	5	1.660	1.542	.059	1.120		<b>P763.4†</b>
1 1/4	10	1.660	1.442	.109	1.810		<b>P3166104.4†</b>
1 1/4	40	1.660	1.380	.140	2.294	<b>P813.4</b>	<b>P792.4</b>
1 1/2	5	1.900	1.770	.065	1.274		<b>P843.4†</b>
1 1/2	10	1.900	1.682	.109	2.085		<b>P3190104.4†</b>
1 1/2	40	1.900	1.610	.145	2.743	<b>P911.4</b>	<b>P897.4</b>

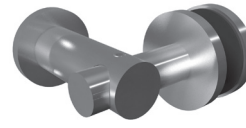
**Glass Mounting Options:**



Rounded Clip



Square Clip



Single Point Spider



Single Flat Arm



Double Flat Arm

**Legato Round Post - 1 1/2" Schedule 40 (1.90" Diameter with .145" Wall)**

These **Posts** are 42" high and are produced from 1 1/2" Schedule 40 Pipe (1.90" Diameter with a .145" Wall). Type 316 Stainless Steel with a brushed satin finish. Shown for surface mount - also may be produced for embedded or fascia mount.



MOUNT	END POST SQUARE CLIP	MID POST SQUARE CLIP	END POST ROUNDED CLIP	MID POST ROUNDED CLIP	END POST TWO POINT CLIP	MID POST TWO POINT CLIP	END POST SINGLE FLAT ARM	MID POST DOUBLE FLAT ARM
Surface	LG31942AESM.4	LG31942AMSM.4	LG31942BESM.4	LG31942BMSM.4	LG31942CESM.4	LG31942CMSM.4	LG31942DESM.4	LG31942DMSM.4
Fascia	LG31942AEFM.4	LG31942AMFM.4	LG31942BEFM.4	LG31942BMFM.4	LG31942CEFM.4	LG31942CMFM.4	LG31942DEFM.4	LG31942DMFM.4
Embed	LG31942AEEM.4	LG31942AEMEM.4	LG31942BEEM.4	LG31942BEMEM.4	LG31942CEEM.4	LG31942CEMEM.4	LG31942DEEM.4	LG31942DEMEM.4

**NUMBERS IN BOLD TYPE** are typically in stock. Other items may not be available for immediate shipment or are made-to-order - requiring a minimum quantity and a longer lead time. Visit [shop.wagnercompanies.com](http://shop.wagnercompanies.com) for availability.