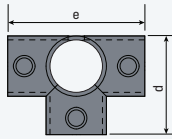


Kee Klamp® Fittings

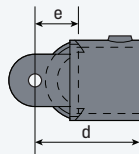
Side Outlet Tee



KK35-7

Pipe Size	OD Size	d	e	Malleable Iron
3/4"	1.05"	1.61"	3.23"	KK35-5
1"	1.315"	1.81"	3.62"	KK35-6
1 1/4"	1.66"	2.36"	4.72"	KK35-7
1 1/2"	1.90"	2.68"	5.35"	KK35-8
2"	2.375"	3.35"	6.61"	KK35-9

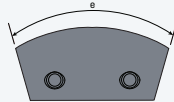
Female Single Swivel Socket Member



KKF50-9

Pipe Size	OD Size	d	e	Bolt Hole	Malleable Iron
3/4"	1.05"	2.36"	.98"	.39"	KKF50-5
1"	1.315"	2.36"	.98"	.39"	KKF50-6
1 1/4"	1.66"	2.68"	.98"	.39"	KKF50-7
1 1/2"	1.90"	2.99"	.98"	.39"	KKF50-8
2"	2.375"	3.35"	1.02"	.39"	KKF50-9

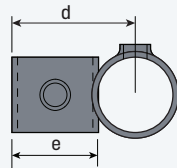
Obtuse Angle Elbow 125° to 178°



KK55-7

Pipe Size	OD Size	e	Malleable Iron
1"	1.315"	4.57"	KK55-6
1 1/4"	1.66"	6.06"	KK55-7
1 1/2"	1.90"	6.02"	KK55-8

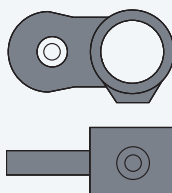
Crossover



KK45-7

Pipe Size (a)	Pipe Size (b)	OD Size	d	e	Malleable Iron
3/4"	3/4"	1.05"	1.34"	1.22"	KK45-5
1"	1"	1.315"	1.57"	1.50"	KK45-6
1"	1"	1.315"	1.42"	1.69"	KK45-65*
1 1/4"	1 1/4"	1.66"	2.13"	1.81"	KK45-7
1 1/4"	1 1/4"	1.66"	1.77"	1.81"	KK45-7*
1 1/2"	1 1/2"	1.90"	2.17"	2.01"	KK45-8
1 1/2"	1 1/2"	1.90"	1.89"	2.00"	KK45-86*
1 1/2"	1 1/2"	1.90"	2.01"	2.00"	KK4587*
2"	2"	2.375"	2.64"	2.40"	KK45-9
2"	2"	2.375"	2.36"	2.99"	KK45-98*

Male Single Horizontal Swivel Socket Member



KKMH50-6

Pipe Size	OD Size	Hole Dia	Malleable Iron
1"	1.315"	0.39"	KKMH50-6

* Through connection and terminal connection are different pipe sizes

Learn more or order at WagnerCompanies.com

