

Kee Klamp® Fittings

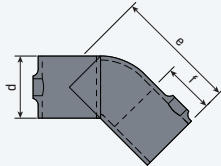
- Quick way to assemble structural pipe systems
- Galvanized malleable iron
- Reduce labor costs by 70%
- 100% reusable
- No welding or threading
- No drilling or bolting

Kee Klamp® are strong, malleable iron, slip-on pipe fittings with one to five case-hardened set screws per fitting—depending on the number of pipes to be joined at one joint.

45° Single Socket Tee



KK12-7

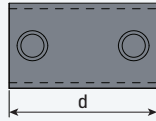


Pipe Size	OD Size	d	e	f	Malleable Iron
1"	1.315"	1.73"	3.35"	1.38"	KK12-6
1 1/4"	1.66"	2.17"	3.70"	1.58"	KK12-7
1 1/2"	1.90"	2.36"	4.25"	1.58"	KK12-8

Straight Coupling



KK14-7



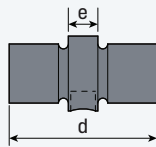
Pipe Size	OD Size	d	Malleable Iron
1"	1.315"	3.50"	KK14-6
1 1/4"	1.66"	4.01"	KK14-7
1 1/2"	1.90"	4.09"	KK14-8
2"	2.375"	4.88"	KK14-9

Internal Coupling

This coupling is not to be used as a load bearing joint. Do not powder coat.



KK18-7

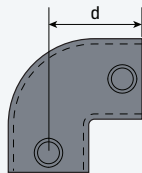


Pipe Size	OD Size	d	e	Malleable Iron
1"	1.315"	2.99"	.79"	KK18-6
1 1/4"	1.66"	2.99"	.79"	KK18-7
1 1/2"	1.90"	3.74"	.79"	KK18-8

90° Elbow



KK15-7

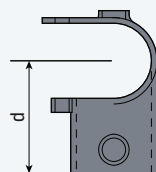


Pipe Size	OD Size	d	Malleable Iron
1"	1.315"	1.81"	KK15-6
1 1/4"	1.66"	2.36"	KK15-7
1 1/2"	1.90"	2.67"	KK15-8
2"	2.375"	3.34"	KK15-9

Clamp-On Tee



KK16-7



Pipe Size	OD Size	d	Malleable Iron
1 1/4"	1.66"	2.68"	KK16-7
1 1/2"	1.90"	2.87"	KK16-8
2"	2.375"	3.54"	KK16-9