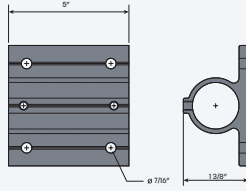


Speed-Rail® Aluminum Slip-On Fittings

Extruded Wall Flange



SR52E-7

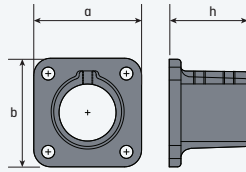


Pipe Size	OD Size	Height	Base Diameter	Mounting Hole	Alloy 6063 Aluminum
1 1/4"	1.66"	1 3/8"	5" x 5"	7/16"	SR52E-7
1 1/2"	1.90"	1 3/8"	5" x 5"	7/16"	SR52E-8
2"	2.375"	1 5/8"	6" x 5"	9/16"	SR52E-9

Square Floor Flange



SR45-7

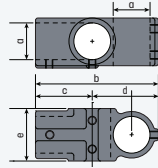


Pipe Size	OD Size	h	a	b	Mounting Hole	Alloy 535 Aluminum
3/4"	1.05"	1 1/2"	2 5/8"	2 5/8"	5/16"	SR45-5
1"	1.315"	1 13/16"	3"	3"	5/16"	SR45-6
1 1/4"	1.66"	2 3/16"	3 3/8"	3 3/8"	7/16"	SR45-7
1 1/2"	1.90"	2 1/2"	3 5/8"	3 5/8"	7/16"	SR45-8

Side Outlet Cross



SR104-7

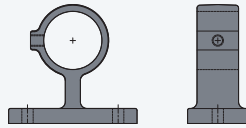


Pipe Size	OD Size	a	b	c	d	e	Alloy 535 Aluminum
3/4"	1.05"	1 1/16"	6 13/16"	2 31/32"	2 1/16"	1 7/16"	SR104-5
1"	1.315"	1 11/32"	5 5/8"	2 19/32"	1 13/16"	2 3/8"	SR104-6
1 1/4"	1.66"	1 11/16"	4 5/8"	2 1/8"	1 7/16"	2 3/8"	SR104-7
1 1/2"	1.90"	1 15/16"	3 7/16"	1 25/32"	1 3/16"	2 3/4"	SR104-8

Offset Support Bracket



SR55-7

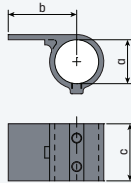


Pipe Size	OD Size	Alloy 535 Aluminum
1 1/4"	1.66"	SR55-7
1 1/2"	1.90"	SR55-8

Platform Bracket



SR96-8

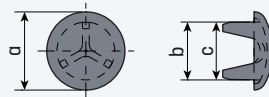


Pipe Size	OD Size	a	b	c	Alloy 535 Aluminum
1 1/2"	1.90"	1 5/16"	3"	2 1/2"	SR96-8

End Cap



SR60-7

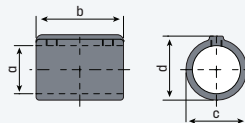


Pipe Size	OD Size	a	b	c	Alloy 535 Aluminum
1"	1.315"	1 9/16"	1 1/16"	1 1/32"	SR60-6
1 1/4"	1.66"	1 21/32"	1 13/32"	1 3/8"	SR60-7
1 1/2"	1.90"	2 3/16"	1 5/8"	1 5/8"	SR60-8
2"	2.375"	2 21/32"	2 3/32"	2 1/16"	SR60-9

External Coupling



SR70-8



Pipe Size	OD Size	a	b	Alloy 535 Aluminum
1"	1.315"	1 11/32"	3 1/2"	SR70-6
1 1/4"	1.66"	1 3/8"	3 1/2"	SR70-7
1 1/2"	1.90"	2 15/16"	3 1/2"	SR70-8
2"	2.375"	2 13/32"	4 1/16"	SR70-9

STANDARD PRODUCTS

RAILING SYSTEMS

LONG LENGTHS

CUSTOM SERVICES

INDEX

