

### Weld Block

Supplied with centered 1/2"-13 tapped hole.

Size	Package	STEEL
2 1/2" x 2 3/4" x 1/2"	10	<a href="#">GR175WB-10</a>

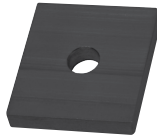
**Note:** For structural purposes, it may be required to weld **Weld Blocks** on three sides. This will require a thicker **Weld Block** for clearance. Contact **Wagner** with your specifications.



### Drain Block

These **Drain Blocks** are placed under exterior installed **Base Shoe Mouldings** to provide drainage. One **Drain Block** should be placed under each mounting hole. They may be rotated for use with any available **Base Shoe Moulding**.

Size	Package	Color	ALUMINUM
2 1/2" x 2 3/4" x 1/4"	10	Black	<a href="#">GR225DB-10</a>



### Cap Screws

Low profile, flat head, socket head for mounting to tapped Steel substrates. **Washer** included. Use with **Base Shoe Moulding with Counterbored Holes**.

Recommended Torque: 43 ft-lbf.

Size	Package	STEEL ZINC PLATED	STAINLESS
1/2-13 x 3/4"	10	<a href="#">SHC1Z1213-0750</a>	<a href="#">SHC3NI213-0750</a>



### Self Tapping Concrete Anchor

Use for **Base Shoe Moulding with Counterbored Holes**. Use 1/2" masonry bit

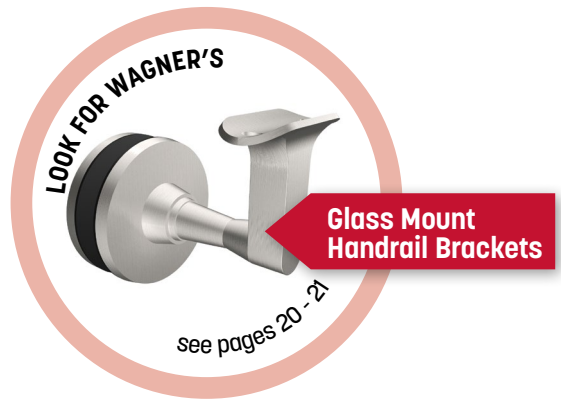
Size	Package	STEEL ZINC PLATED
1/2" x 4 1/2"	25	<a href="#">KHEZ500-0450</a>



### Expansion Anchor

Use for **Base Shoe Moulding with Counterbored Holes**. Use 9/16" masonry bit.

Size	Package	STEEL ZINC PLATED
1/2" x 5 1/8"	20	<a href="#">HSL3M1040</a>



### Stackable Shims

5 1/8" Overall. 5/8" Slot Hole. 1,008/case

May be stacked as necessary.

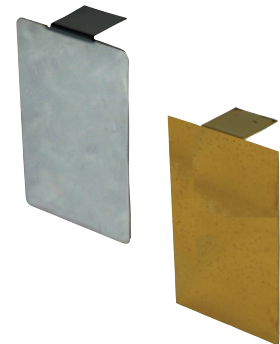
Supplied by the case - 63 stacks of 16 shims, stacked 1" high.

Thickness 1/16"	Stacks per Case 63
Shims per Stack 16	PLASTIC <a href="#">GRGL16</a>

### Horseshoe Shims

2" Wide x 3" Long. 10/package. Thicknesses as noted below. Will not compress or project beyond the **Base Shoe Moulding**. May be stacked as necessary.

Thickness	ALUMINUM
1/16"	<a href="#">GR2HS06</a>
1/8"	<a href="#">GR2HS12</a>
1/4"	<a href="#">GR2HS25</a>



End Caps Formed From Sheet

### Base Shoe Moulding End Caps - Formed from Sheet

Width	Height	SATIN ALUMINUM	SATIN ANODIZED ALUMINUM	SATIN STAINLESS	POLISHED STAINLESS	POLISHED BRASS ALLOY 260
2 1/2"	4 1/8"	<a href="#">GR2852E.4</a>	<a href="#">GR2852E.4AN</a>	<a href="#">GR3852E.4</a>	<a href="#">GR3852E.7</a>	<a href="#">GR4852E.7</a>
2 3/4"	4 1/8"	<a href="#">GR2876E.4</a>		<a href="#">GR3876E.4</a>	GR3876E.7	<a href="#">GR4876E.7</a>

### Base Shoe Moulding End Caps - Formed from Sheet

These **End Caps** are for use when **Base Shoe Moulding** uses **Cladding** and **Cladding Tape** results in widening the overall width of the base by 1/8" - 1/16" on each side.

Width	Height	SATIN ALUMINUM	SATIN ANODIZED ALUMINUM	SATIN STAINLESS	POLISHED STAINLESS	POLISHED BRASS ALLOY 260
2 5/8"	4 1/8"	<a href="#">GR2852EC.4</a>	<a href="#">GR2852EC.4AN</a>	<a href="#">GR3852EC.4</a>	<a href="#">GR3852EC.7</a>	<a href="#">GR4852EC.7</a>
2 7/8"	4 1/8"	GR2876EC.4	GR2876EC.4AN	<a href="#">GR3876EC.4</a>	GR3876EC.7	GR4876EC.7

**NUMBERS IN BOLD TYPE** are typically in stock. Other items may not be available for immediate shipment or are made-to-order - requiring a minimum quantity and a longer lead time. Visit [shopwagner.com](http://shopwagner.com) for availability.