

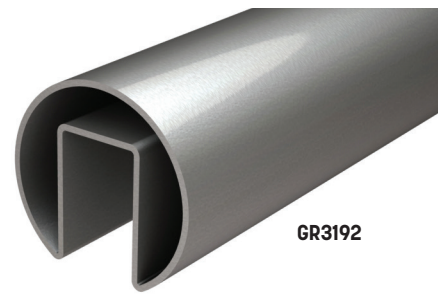
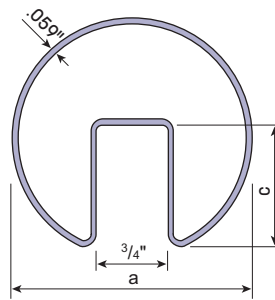
Roll Formed Top Rail

18' Lengths.

Type 304 or Type 316.

Mill, Satin or Bright Polished Finish.

These Stainless Steel sections have no visible seam and are suitable for bending.



Type 304 Stainless Steel

a	c	Finish	TOP RAIL	END CAP	INTERNAL SPLICE	HORIZONTAL MITER CORNER	VERTICAL MITER CORNER
1.66"	1"	Mill	GR3166		GR3166S*		
1.66"	1"	Satin	GR3166.4	GR3169E.4	GR3166S*	GR3166MK.4	GR3166MKV.4
1.66"	1"	Long. Satin	GR3166.4L	GR3169E.4	GR3166S*		
1.66"	1"	Polished	GR3166.7	GR3169E.7	GR3166S*	GR3166MK.7	GR3166MKV.7
1.90"	1 1/4"	Mill	GR3190		GR3190S*		
1.90"	1 1/4"	Satin	GR3190.4	GR3193E.4	GR3190S*	GR3190MK.4	
1.90"	1 1/4"	Long. Satin	GR3190.4L	GR3193E.4	GR3190S*		
1.90"	1 1/4"	Polished	GR3190.7	GR3193E.7	GR3190S*	GR3190MK.7	
2.50"	1 1/4"	Mill	GR3250		GR325CS*		

Type 316 Stainless Steel

a	b	c	Finish	TOP RAIL	END CAP	INTERNAL SPLICE	HORIZONTAL MITER CORNER	VERTICAL MITER CORNER
1.50"	3/4"	1"	Mill	GR3152		GR315LS		
1.50"	3/4"	1"	Satin	GR3152.4	GR3152E.4	GR315LS	GR3152MK.4	GR3152MKV.4
1.50"	3/4"	1"	Long. Satin	GR3152.4L	GR3152E.4	GR315LS		
1.50"	3/4"	1"	Polished	GR3152.7	GR3152E.7	GR315LS	GR3152MK.7	GR3152MKV.7
1.66"	3/4"	1"	Mill	GR3168		GR3166S*		
1.66"	3/4"	1"	Satin	GR3168.4	GR3169E.4	GR3166S*	GR3168MK.4	GR3168MKV.4
1.66"	3/4"	1"	Long. Satin	GR3168.4L	GR3169E.4	GR3166S*		
1.66"	3/4"	1"	Polished	GR3168.7	GR3169E.7	GR3166S*	GR3168MK.7	
1.66"	15/16"	15/16"	Satin	GR3169.4**	GR3169E.4	GR3169S*	GR3169MK.4	GR3169MKV.4
1.90"	3/4"	1 1/4"	Mill	GR3192		GR3190S		
1.90"	3/4"	1 1/4"	Satin	GR3192.4	GR3193E.4	GR3190S*	GR3192MK.4	
1.90"	1 1/16"	1 3/16"	Satin	GR3193.4***	GR3193E.4	GR3193S*		
2.00"	3/4"	1 1/4"	Mill	GR3202		GR320LS		
2.00"	3/4"	1 1/4"	Satin	GR3202.4	GR3202E.4	GR320LS	GR3202MK.4	
2.00"	3/4"	1 1/4"	Long. Satin	GR3202.4L	GR3202E.4	GR320LS		
2.00"	3/4"	1 1/4"	Polished	GR3202.7	GR3202E.7	GR320LS	GR3202MK.7	

* Aluminum for use with Stainless Steel.

** For use with 1/2" or 3/4" monolithic or laminated glass. With 3/4" glass, secure in place with GR95CBC silicone. Use gasket GR9397.

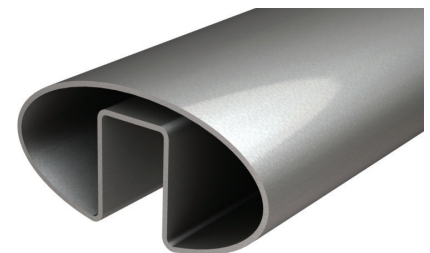
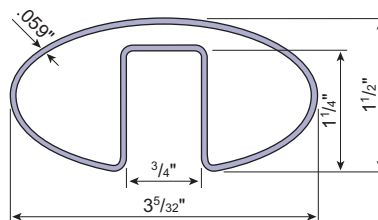
Oval Formed Top Rail

18' Lengths, 2.134 lb/ft.

Type 304, Mill, Satin or Bright Polished Finish.

These Stainless Steel sections have no visible seam and are suitable for bending.

For use with glass up to 9/16" thick.



Finish	TOP RAIL	END CAP	INTERNAL SPLICE	HORIZONTAL MITER CORNER	VERTICAL MITER CORNER
Mill	GR3315		GR3315S		
Satin, Longitudinal	GR3315.4L	GR3315E.4	GR3315S	GR3315MK.4L	GR3315MKV.4L
Polished	GR3315.7	GR3315E.7	GR3315S	GR3315MK.7	GR3315MKV.7

STANDARD PRODUCTS

RAILING SYSTEMS

TRADITIONAL RAILING

CUSTOM SERVICES

APPENDIX