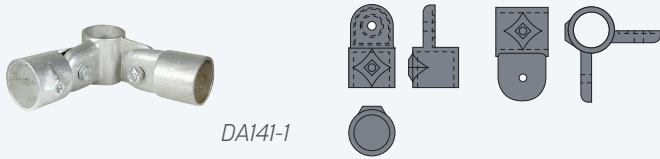


Aluminum Slip-On Pipe and OD Tube Fittings

Railing Downturn or Brace Fitting

Two DA125 and one DA140 is DA141.

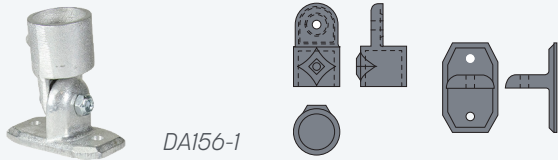


DA141-1

Pipe Size	Tube OD	Aluminum
3/4"	1.05"	DA141-1
1"	1.315"	DA141-2
1 1/4"	1.66"	DA141-3
1 1/2"	1.90"	DA141-4

Adjustable Flange

One DA125 and one DA155 is DA156.

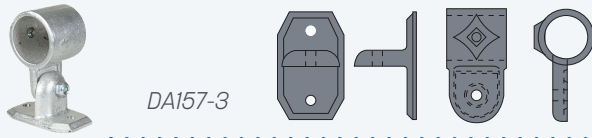


DA156-1

Pipe Size	Tube OD	Aluminum
3/4"	1.05"	DA156-1
1"	1.315"	DA156-2
1 1/4"	1.66"	DA156-3
1 1/2"	1.90"	DA156-4

Lean-To Flange

One DA155 and one DA130 is DA157.



DA157-3

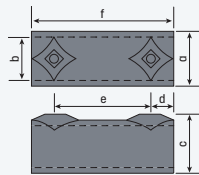
Pipe Size	Tube OD	Aluminum
1 1/4"	1.66"	DA157-3
1 1/2"	1.90"	DA157-4

Coupling

5 1/4" long.



DA510-3

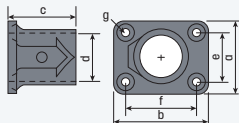


Pipe Size	Tube OD	a	b	c	d	e	f	Aluminum
1 1/4"	1.66"	2"	11 1/16"	2 1/8"	13 1/16"	3 5/8"	5 1/4"	DA510-3
1 1/2"	1.90"	2 1/4"	115/16"	2 7/16"	1"	3 5/8"	5 9/16"	DA510-4

Rectangular Base Flange



DA150S-1

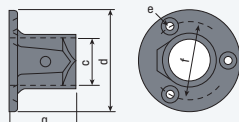


Pipe Size	Tube OD	a	b	c	d	e	f	g	Aluminum
3/4"	1.05"	2 7/8"	15/8"	11 1/16"	11 1/16"	2 1/8"	11 1/16"	3 1/16"	DA150S-1*
1"	1.315"	2 1/8"	2 3/4"	2 1/16"	15 1/16"	1 7/16"	2"	1/4"	DA150S-2
1 1/4"	1.66"	2 9/16"	3 1/4"	2 7/16"	11 1/16"	1 5/8"	2 5/16"	1/4"	DA150S-3
1 1/2"	1.90"	3 1/16"	3 11/16"	2 11/16"	115/16"	2"	2 5/8"	5/16"	DA150S-4

Round Base Flange



DA150R-1



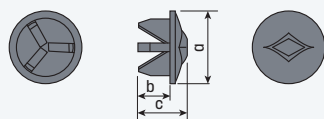
Pipe Size	Tube OD	a	c	d	e	f	Aluminum
3/4"	1.05"	1 5/8"	1 1/16"	2 1/2"	3 1/16"	2"	DA150R-1
1"	1.315"	2 1/16"	1 5/16"	3 1/8"	1/4"	2 3/8"	DA150R-2
1 1/4"	1.66"	2 7/16"	1 11/16"	3 1/2"	1/46"	2 13/16"	DA150R-3
1 1/2"	1.90"	2 11/16"	1 15/16"	4"	5/16"	3 1/4"	DA150R-4

Plug

These Plugs are to close opening in Fittings—not pipe. For pipe end caps and plugs.



DA500-1



Pipe Size	Tube OD	a	b	c	Aluminum
3/4"	1.05"	1 3/16"	1/2"	3/4"	DA500-1
1"	1.315"	1 1/2"	1/2"	3/4"	DA500-2
1 1/4"	1.66"	1 7/8"	3/4"	1"	DA500-3
1 1/2"	1.90"	2 1/16"	3/4"	1"	DA500-4

* Two-hole base