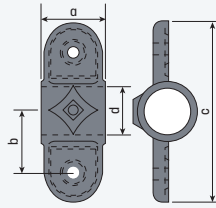


Aluminum Slip-On Pipe and OD Tube Fittings

Double Swivel



DA135-3

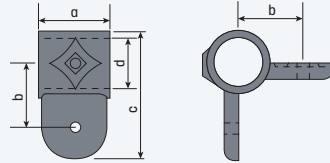


Pipe Size	Tube OD	a	b	c	d	Aluminum
1 1/4"	1.66"	2 1/4"	2"	5 7/8"	1 11/16"	DA135-3
1 1/2"	1.90"	2 1/4"	2 1/8"	6"	1 15/16"	DA135-4

Right Angle Swivel



DA140-1

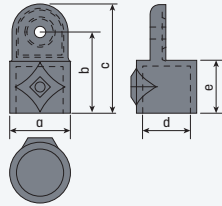


Pipe Size	Tube OD	a	b	c	d	Aluminum
3/4"	1.05"	1 3/8"	1 1/4"	2 9/16"	1 1/16"	DA140-1
1"	1.315"	1 1/2"	1 1/2"	3 1/16"	1 5/16"	DA140-2
1 1/4"	1.66"	2 3/16"	2"	3 15/16"	1 11/16"	DA140-3
1 1/2"	1.90"	2 1/4"	2 1/4"	4 1/4"	1 15/16"	DA140-4

Socket Swivel



DA125-1



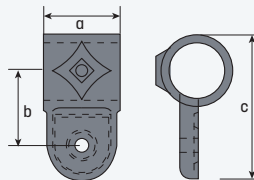
Pipe Size	Tube OD	a	b	c	d	e	Aluminum
3/4"	1.05"	1 5/16"	1 13/16"	2 1/2"	1 11/16"	1"	DA125-1
1"	1.315"	1 5/8"	2 1/8"	2 5/8"	1 5/16"	1 1/4"	DA125-2
1 1/4"	1.66"	2"	2 3/4"	3 3/4"	1 11/16"	1 5/8"	DA125-3
1 1/2"	1.90"	2 1/4"	2 13/16"	3 3/4"	1 15/16"	1 5/8"	DA125-4



Swivel



DA130-1

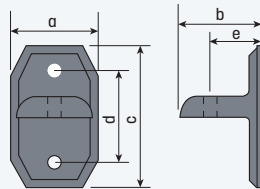


Pipe Size	Tube OD	a	b	c	d	Aluminum
3/4"	1.05"	1 3/8"	1 5/16"	2 9/16"	1 1/16"	DA130-1
1"	1.315"	1 1/2"	1 1/2"	2 7/8"	1 5/16"	DA130-2
1 1/4"	1.66"	2 1/4"	2 1/4"	4"	1 11/16"	DA130-3
1 1/2"	1.90"	2 1/4"	2 1/4"	4 1/2"	1 15/16"	DA130-4

Adjustable Flange Base



DA155-1



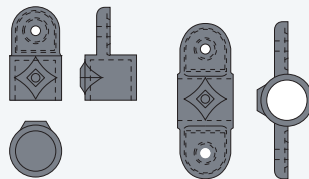
Pipe Size	Tube OD	a	b	c	d	e	Aluminum
3/4"	1.05"	1 9/16"	1 1/2"	2 1/2"	1 11/16"	1 5/16"	DA155-1
1"	1.315"	1 9/16"	1 1/2"	2 1/2"	1 11/16"	1 5/16"	DA155-2
1 1/4"	1.66"	2 1/4"	2 1/2"	3 1/2"	2 5/8"	1 1/2"	DA155-3
1 1/2"	1.90"	2 1/4"	2 1/2"	3 1/2"	2 5/8"	1 1/2"	DA155-4

Railing Step and Landing Combination

Two DA125 and one DA135 is DA136.



DA136-1



Pipe Size	Tube OD	Aluminum
3/4"	1.05"	DA136-1
1"	1.315"	DA136-2
1 1/4"	1.66"	DA136-3
1 1/2"	1.90"	DA136-4

STANDARD PRODUCTS

RAILING SYSTEMS

LONG LENGTHS

CUSTOM SERVICES

INDEX

