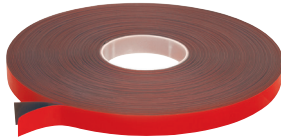
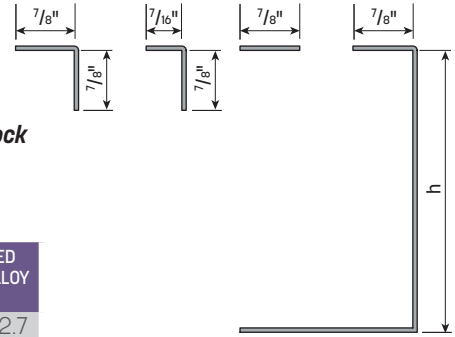


Cladding for Base Shoe Moulding
10' Lengths

a h Thick.
7/8" 4 1/8" 1/16"

CLEAR SATIN ANODIZED ALUMINUM	SATIN STAINLESS TYPE 304	SATIN STAINLESS TYPE 316	POLISHED STAINLESS TYPE 304	POLISHED BRASS ALLOY 260
GR2802.4AN	GR3802.4	GR3806.4	GR3802.7	GR4802.7

Contact **Wagner** for Custom **Cladding** for **Fascia, Embed, Wedge Block** and **Drain Block** applications.



Cladding Tape

3/4" x 108" x .043" Roll

Pressure sensitive, high strength adhesive used for adhering **Cladding** and **End Caps** to **Base Shoe Moulding**.

Cladding Tape	PART NUMBER
	GR975

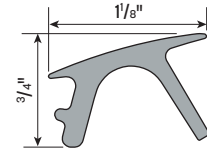


Gasket - Black

For use with **Cladding** only. 1 1/8" Wide x 1/4" High.

Peel back paper to reveal self-adhesive strip. Stick onto underside of **Cladding** before applying **Cladding** to **Base Shoe Moulding**. Accommodates all glass sizes.

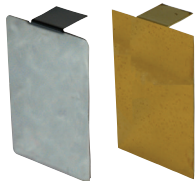
	GLASS OVER .460"
Gasket 20'	GR9302-20
Gasket 40'	GR9302-40
Gasket 100'	GR9302-100
Gasket 500'	GR9302



Gasket - Black, for PanelGrip

For use without **Cladding**.

Gasket 20'	GR9355-20
Gasket 40'	GR9355-40
Gasket 100'	GR9355-100
Gasket 250'	GR9355

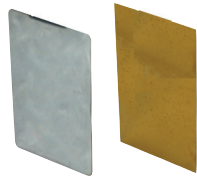


End Caps Formed From Sheet

Base Shoe Moulding End Caps - Formed from Sheet

These **End Caps** are for use when **Base Shoe Moulding** uses **Cladding** and **Cladding Tape** results in widening the overall width of the base by 1/8" - 1/16" on each side.

Width	Height	SATIN ALUMINUM	SATIN ANODIZED ALUMINUM	SATIN STAINLESS	POLISHED STAINLESS	POLISHED BRASS ALLOY 260
2 5/8"	4 1/8"	GR2852EC.4	GR2852EC.4AN	GR3852EC.4	GR3852EC.7	GR4852EC.7
2 7/8"	4 1/8"	GR2876EC.4	GR2876EC.4AN	GR3876EC.4	GR3876EC.7	GR4876EC.7



End Caps Formed From Sheet

Base Shoe Moulding End Caps - Formed from Sheet

These **End Caps** are for use when **Base Shoe Moulding** uses **Cladding** and **Silicone**.

Width	Height	SATIN ALUMINUM	SATIN ANODIZED ALUMINUM	SATIN STAINLESS	POLISHED STAINLESS	POLISHED BRASS ALLOY 260
2 1/2"	4 1/8"	GR2852E.4	GR2852E.4AN	GR3852E.4	GR3852E.7	GR4852E.7
2 3/4"	4 1/8"	GR2876E.4		GR3876E.4	GR3876E.7	GR4876E.7

PanelGRIP
glass railing system

Installation Instructions

IMPORTANT SAFETY INSTRUCTIONS:

GLASS SAFETY:

- Read the installation instructions in their entirety before installing. It is important to save these instructions.
- All components must be installed in accordance with IBC 2015 or per local codes as specified by the "authority having jurisdiction".
- All glass must be tempered monolithic or tempered laminated safety glass.
- Glass selection should be in accordance with:
 - ASTM C1036-16 (Standard Specification for Flat Glass - Table 4 - Dimensional Tolerances for Rectangular Shapes of Type 1 - Transparent Flat Glass)
 - ASTM C1172 -14 (Standard Specification for Laminated Architectural Flat Glass)
 - ASTM C1048 (Specification for Heat Strengthened and Fully Tempered Flat Glass)

- For PanelGrip® accessories and or replacement parts contact:

Wagner Companies
Tel: (888) 243-6914
Tel: (+1) 414-214-0444
Fax: (+1) 414-214-0450
Web: wagnerarchitectural.com
Email: rfq@mailwagner.com

RAIL SAFETY:

- Check and confirm all local railing code requirements.
- A structural analysis may be required per local codes. Structural analysis is the customers' responsibility.
- This product must be installed in a manner consistent with its intended use.