

Aluminum Slip-On Fittings

Slip-On pipe and tubular fittings for railings, racks and other assemblies.

Build storage racks in half the time. Built-in bracing assures you of the safest construction with smooth, rounded connections.

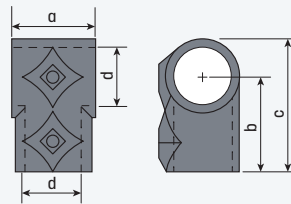
Slip fittings over pipe or OD tube to assemble railings, racks or other products. Fittings are easily secured with a set screw and do not require welding or threading.

Fittings are cast from aluminum alloy 535.2, ASTM B 26 with a tumbled finish. Set screws are plated steel. Bolts are zinc plated steel. Mill finish. Clear anodized finish is available upon request. Stainless steel set screws available upon request.

Economy Tee



DA100-1

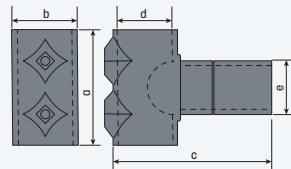


Pipe Size	Tube OD	a	b	c	d	Aluminum
3/4"	1.05"	1 1/2"	1 5/8"	2 5/16"	1 1/16"	DA100-1
1"	1.315"	1 13/16"	2 3/8"	3 1/16"	1 5/16"	DA100-2
1 1/4"	1.66"	2 1/4"	2 5/8"	3 5/8"	1 11/16"	DA100-3
1 1/2"	1.90"	2 3/16"	2 13/16"	4"	1 15/16"	DA100-4

Swivel Tee



DA101-3

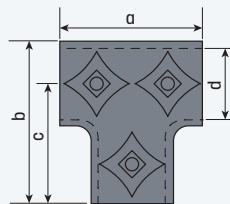


Pipe Size	Tube OD	a	b	c	d	e	Aluminum
1 1/4"	1.66"	2 7/8"	2"	4 5/8"	1 11/16"	1 5/8"	DA101-3
1 1/2"	1.90"	2 7/8"	2 5/16"	5 3/16"	1 15/16"	1 7/8"	DA101-4

Joining Tee



DA102-1



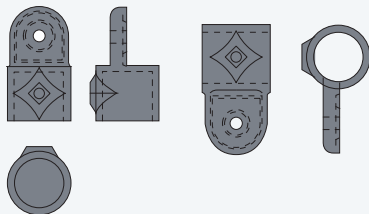
Pipe Size	Tube OD	a	b	c	d	Aluminum
3/4"	1.05"	2 1/4"	2 5/16"	1 5/8"	1 1/16"	DA102-1
1"	1.315"	2 3/4"	3 1/16"	2 3/8"	1 5/16"	DA102-2
1 1/4"	1.66"	2 3/4"	3 5/8"	2 5/8"	1 11/16"	DA102-3
1 1/2"	1.90"	3"	4"	2 13/16"	1 15/16"	DA102-4
2"	2.375"	4 1/16"	5"	3 9/16"	2 7/16"	DA102-5

Adjustable Tee or Brace Fitting

One DA125 and one DA130.



DA103-1



Pipe Size	Tube OD	Aluminum
3/4"	1.05"	DA103-1
1"	1.315"	DA103-2
1 1/4"	1.66"	DA103-3
1 1/2"	1.90"	DA103-4