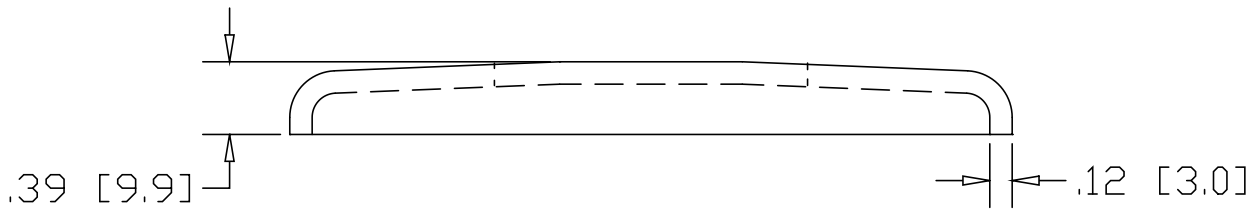
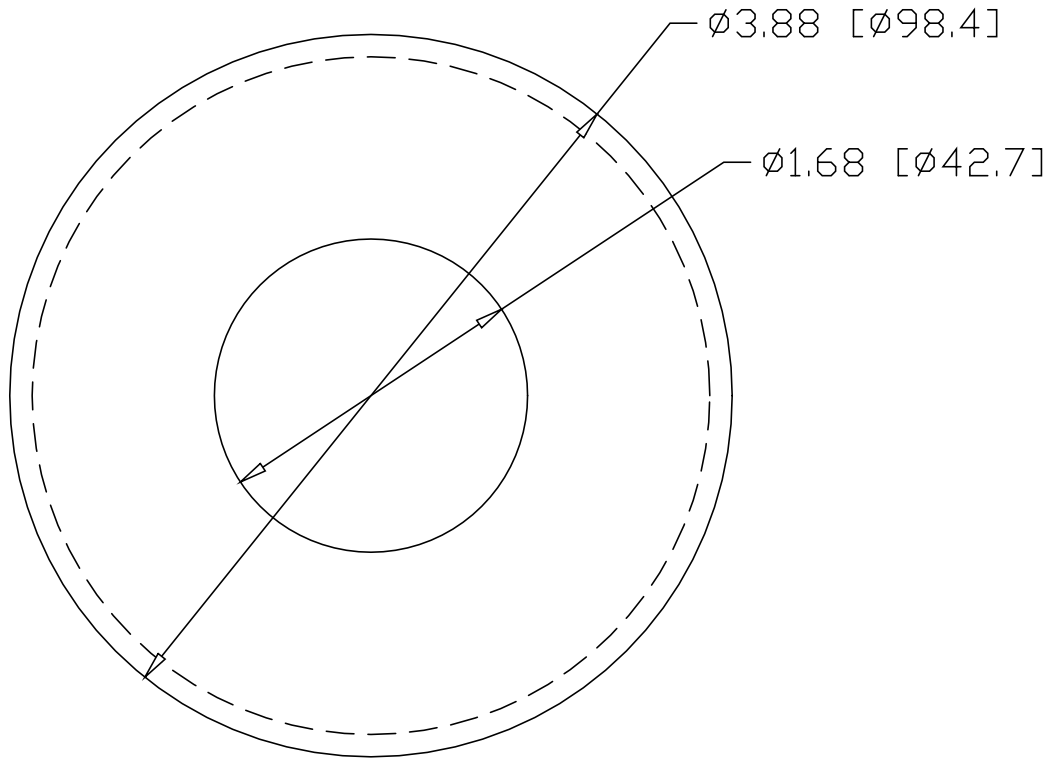



REV  
SH  
BRS2526  
DWG NO

REVISIONS			
REV	DESCRIPTION	DATE	APPROVED



INCHES [MILLIMETERS]

PART NAME		1-1/4" PIPE HEAVY FLUSH BASE FLANGE					
MATERIAL		.125 (260) BRASS SHEET					
DATE	12/23/09		<b>THE WAGNER COMPANIES</b> R & B WAGNER, INC. AND J. G. BRAUN CO.				
DRAWN BY	RJF						
FINISH	MILL						
SIZE	A	WEIGHT	.5 LBS	PART NUMBER	BRS2526	REV	