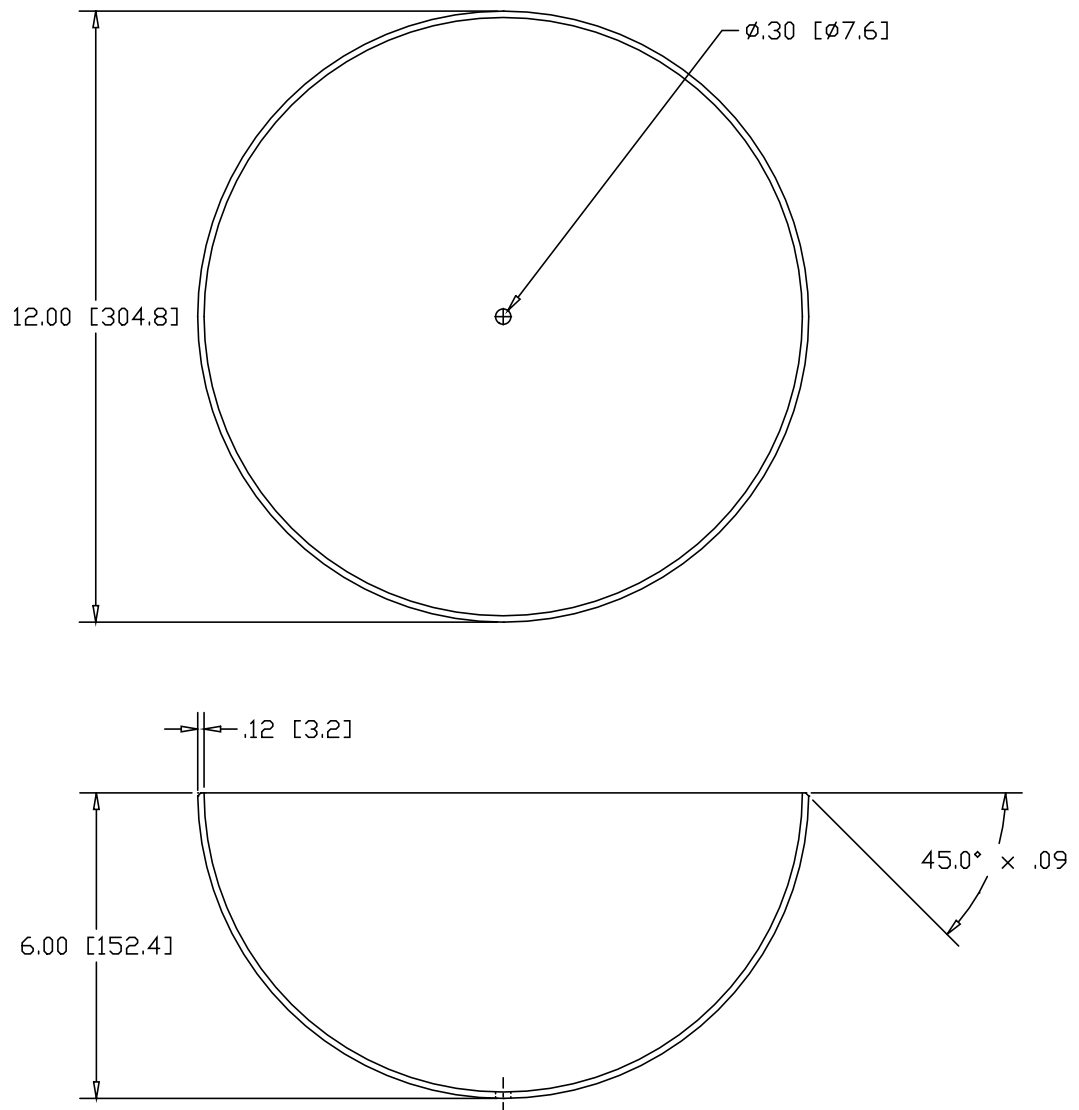


REV
SH
DWG NO B4190

REVISIONS			
REV	DESCRIPTION	DATE	APPROVED
-	ADDED CHAMFER FOR WELDING	11/12/11	PWH



INCHES [MILLIMETERS]

ALTERNATE MATERIAL	PART NUMBER
.125 (.3003) ALUMINUM SHEET ASTM B209	B4192
11 GA. (.1200) 304 STAINLESS STEEL A240	B4194
.125 (.260) BRASS	B4196
.125 (.655) SILICON BRONZE	BSB4190

PART NAME		12.00" HEMISHERE	
MATERIAL		11 GA. (.1196) HRP&D STEEL SHEET ASTM A569	
DATE	1/4/00		THE WAGNER COMPANIES R & B WAGNER, INC. AND J. G. BRAUN CO.
DRAWN BY	RJF		
FINISH	MILL		
SIZE	A	WEIGHT	7.20 LBS
		PART NUMBER	B4190
		REV	