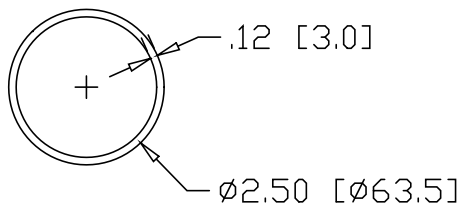
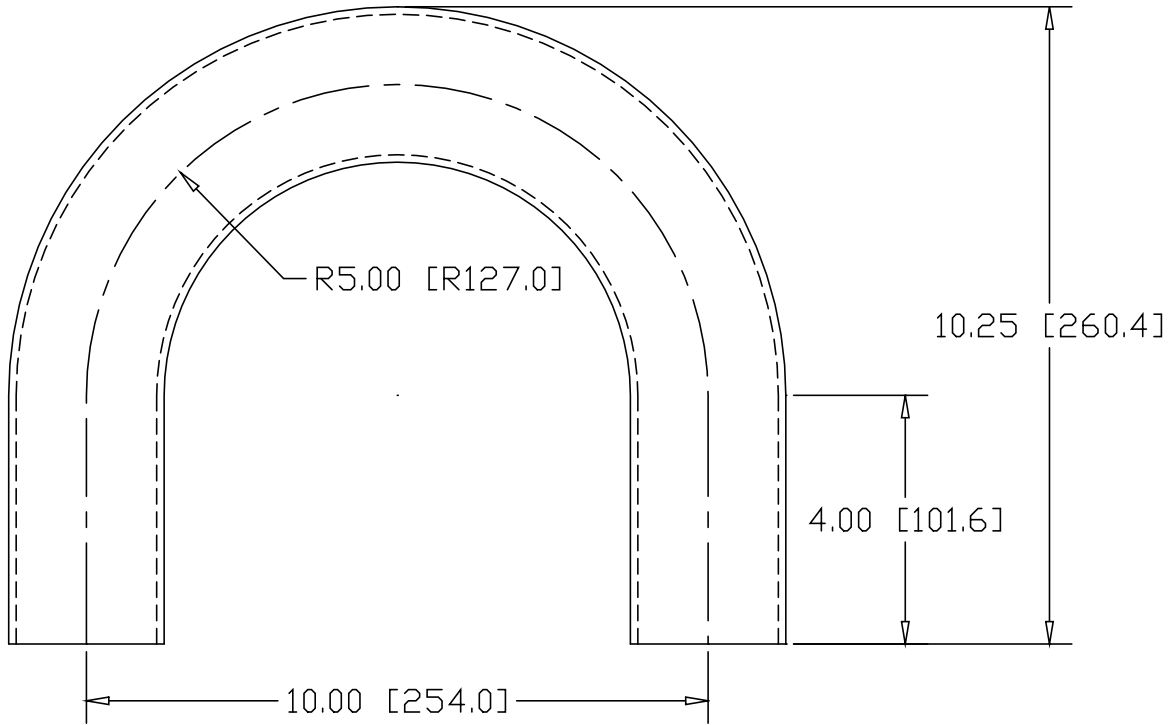


REV
SH
9612
DWG NO

| REVISIONS | | | |
|-----------|-------------|------|----------|
| REV | DESCRIPTION | DATE | APPROVED |



INCHES [MILLIMETERS]

| ALTERNATE MATERIAL | PART NUMBER |
|---|-------------|
| 2.50" OD X .125W 6061 ALUMINUM TUBE | 9615 |
| 2.50" OD X .120W 304 STAINLESS STEEL TUBE | 9617 |
| 2.50" OD X .125W 330 BRASS TUBE | 9619 |

| | | | |
|--|-----------------|--|-----|
| PART NAME 2.50" OD TUBE SIZE 180° ELL X 5" CLR W/(2) 4" TANGENTS | | | |
| MATERIAL 2.50" OD X .120W STEEL TUBE | | | |
| DATE 9/2/03 | | THE WAGNER COMPANIES R & B WAGNER, INC. AND J. G. BRAUN CO. | |
| DRAWN BY RJF | | | |
| FINISH MILL | | | |
| SIZE A | WEIGHT 6.03 LBS | PART NUMBER 9612 | REV |