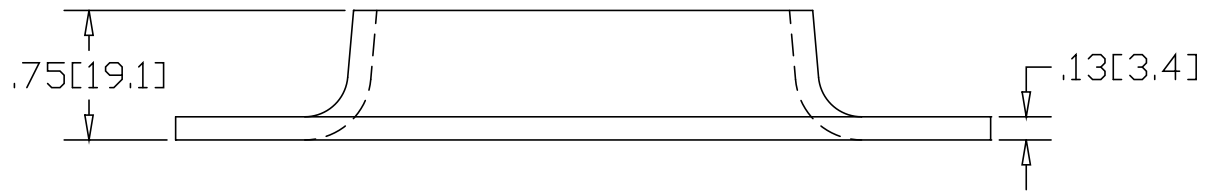
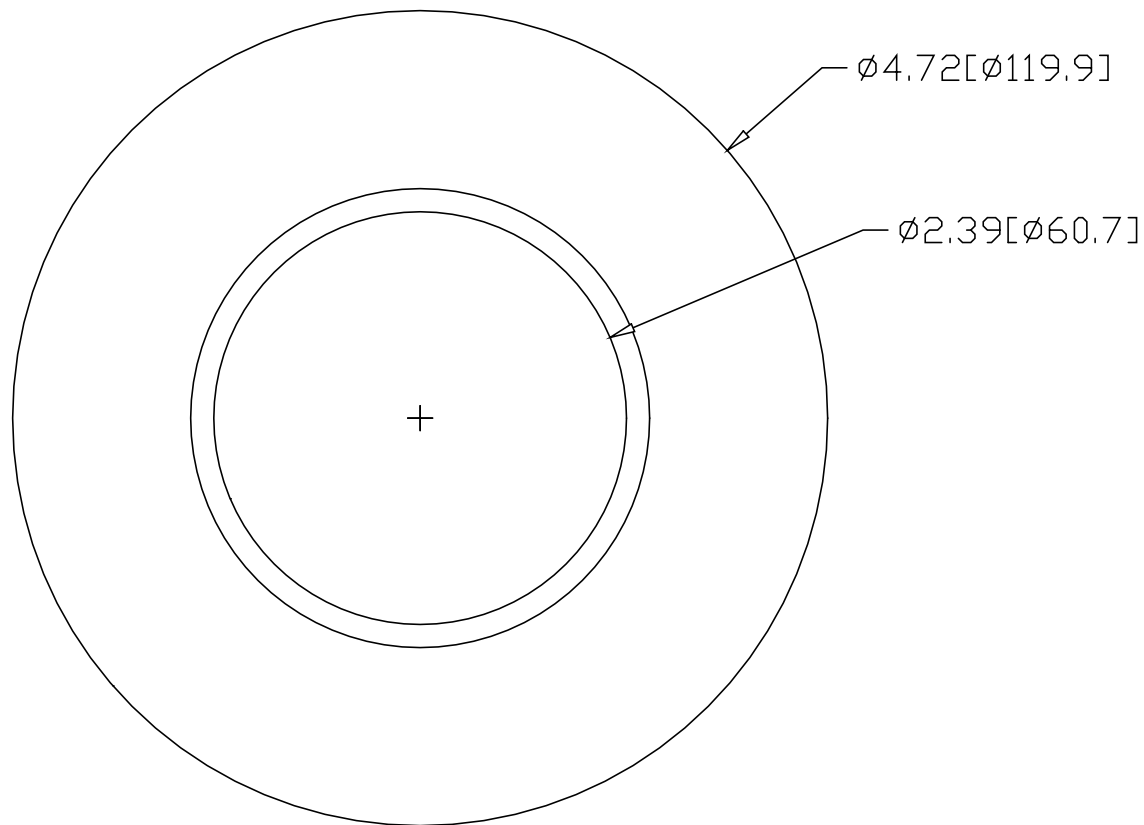



REV  
SH  
642  
DWG NO

REVISIONS			
REV	DESCRIPTION	DATE	APPROVED



INCHES [MILLIMETERS]

ALTERNATE MATERIAL	PART NUMBER
.125 (3003) ALUMINUM ASTM B209	682
10 GA. (304) STAINLESS STEEL ASTM A240	725

PART NAME				2" FLAT BASE PIPE FLANGE			
MATERIAL				10 GA. HRP&D STEEL ASTM A-569			
DATE		1/8/99		 <b>R &amp; B WAGNER, INC.</b>			
DRAWN BY		RJF					
FINISH		MILL					
SIZE	WEIGHT	PART NUMBER	REV				
A	.68 LBS	642					