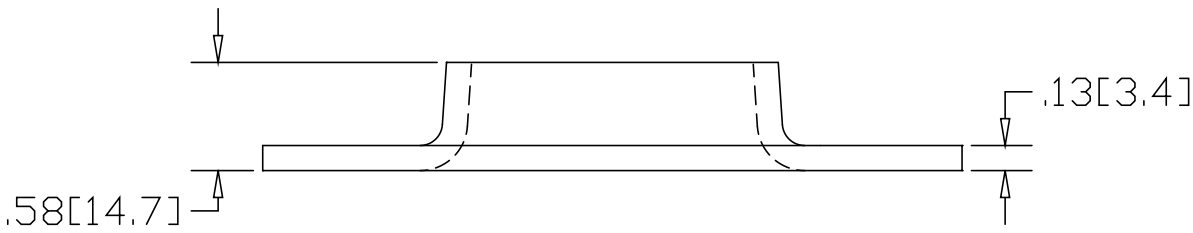
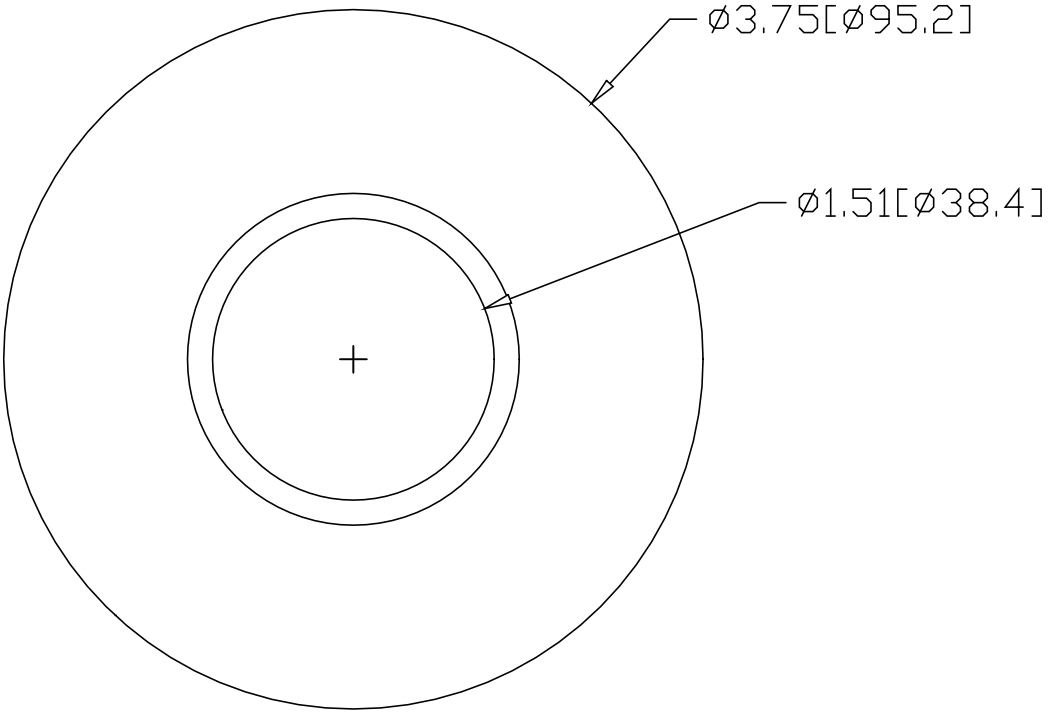


REV  
SH  
634T  
DWG NO

REVISIONS			
REV	DESCRIPTION	DATE	APPROVED



INCHES [MILLIMETERS]

ALTERNATE MATERIAL	PART NUMBER
.125 (3003) ALUMINUM ASTM B209	674T
10 GA. (304) STAINLESS STEEL ASTM A240	714T

PART NAME				1-1/2" O.D. TUBE FLAT BASE FLANGE			
MATERIAL				10 GA. HRP&O STEEL ASTM A-569			
DATE		1/11/99					
DRAWN BY		R.J.F.					
FINISH		MILL					
SIZE	WEIGHT	PART NUMBER	REV				
A	.42 lbs	634T					