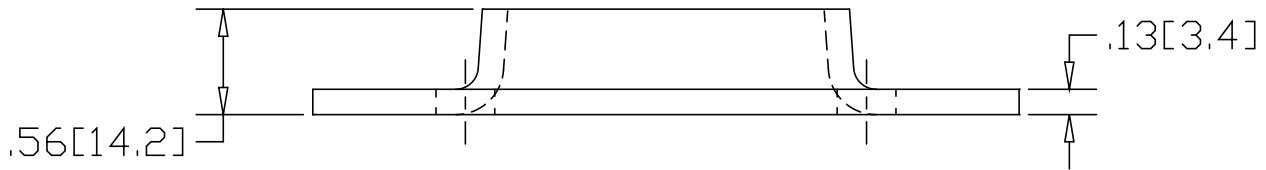
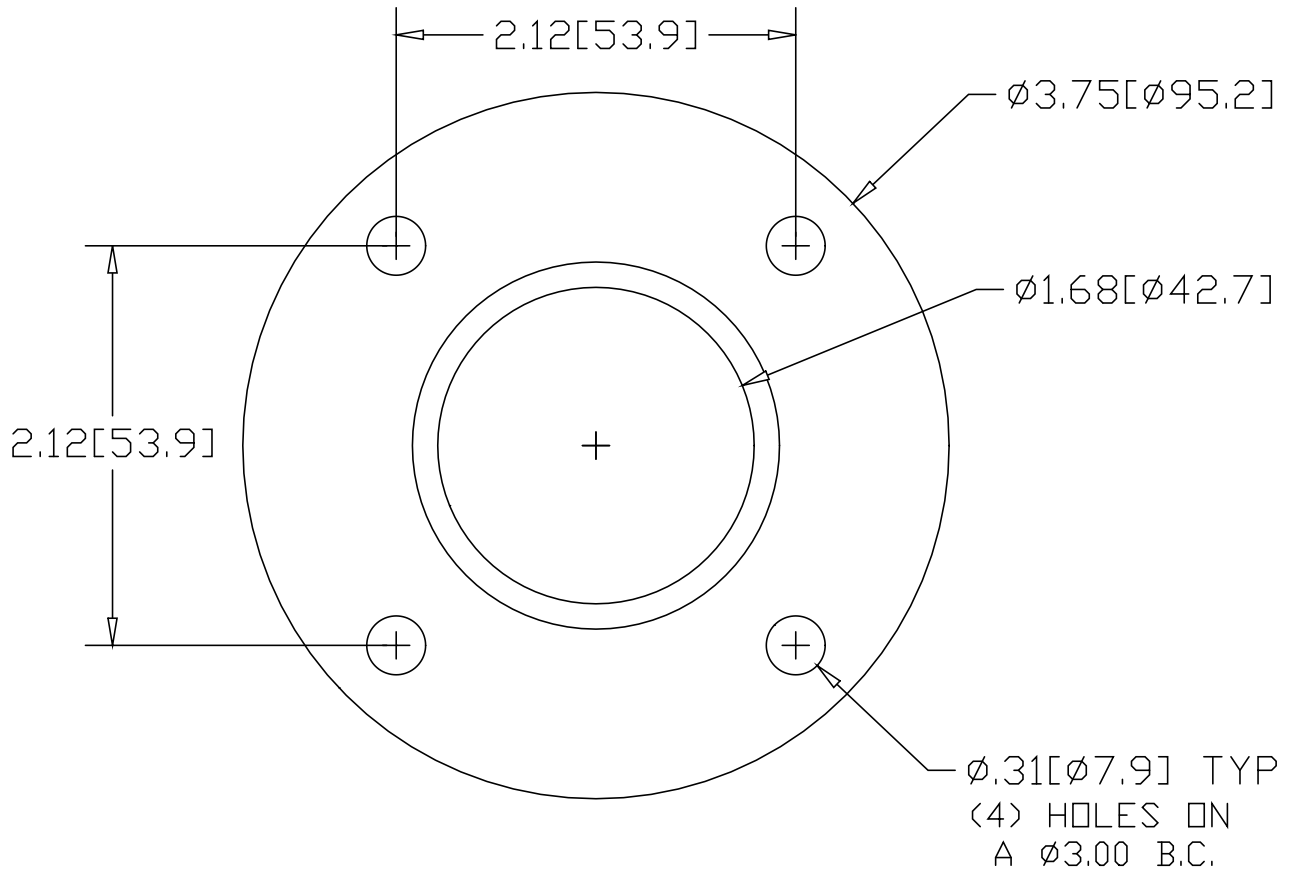



REV  
SH  
628  
DWG NO

REVISIONS			
REV	DESCRIPTION	DATE	APPROVED



INCHES [MILLIMETERS]

ALTERNATE MATERIAL	PART NUMBER
.125 (3003) ALUMINUM ASTM B209	668
10 GA. (304) STAINLESS STEEL ASTM A240	708

PART NAME				1-1/4" FLAT BASE PIPE FLANGE W/(4) HOLES			
MATERIAL				10 GA. HRP&D STEEL ASTM A-569			
DATE	1/7/99			R & B WAGNER, INC.		REV	
DRAWN BY	RJF						
FINISH	MILL	SIZE	A	WEIGHT	.42 lbs	PART NUMBER	628