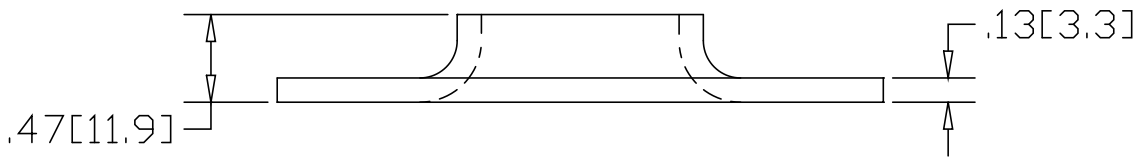
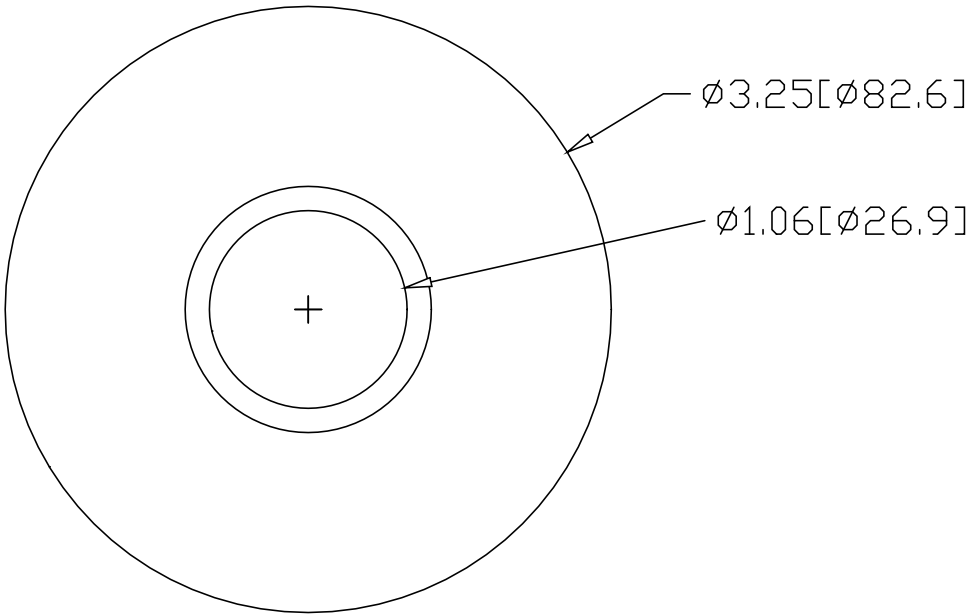



REV  
SH  
610  
DWG NO

REVISIONS			
REV	DESCRIPTION	DATE	APPROVED



INCHES [MILLIMETERS]

ALTERNATE MATERIAL	PART NUMBER
.125 (3003) ALUMINUM ASTM B209	650
10 GA. (304) STAINLESS STEEL ASTM A240	690

PART NAME		3/4" PIPE FLAT BASE FLANGE					
MATERIAL		10 GA. HRP&D STEEL ASTM A-569					
DATE	1/5/99	 <b>THE WAGNER COMPANIES</b> R & B WAGNER, INC. AND J. G. BRAUN CO.					
DRAWN BY	RJF						
FINISH	MILL						
SIZE	A	WEIGHT	.3 LBS	PART NUMBER	610	REV	