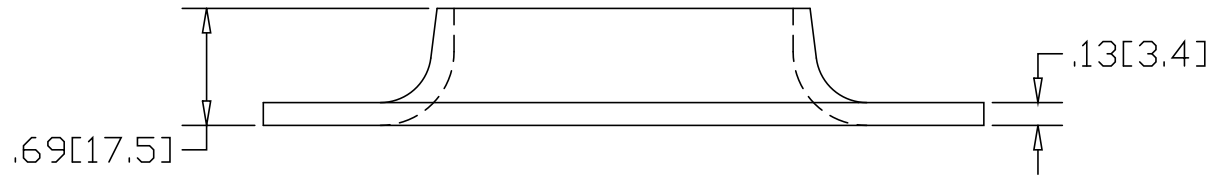
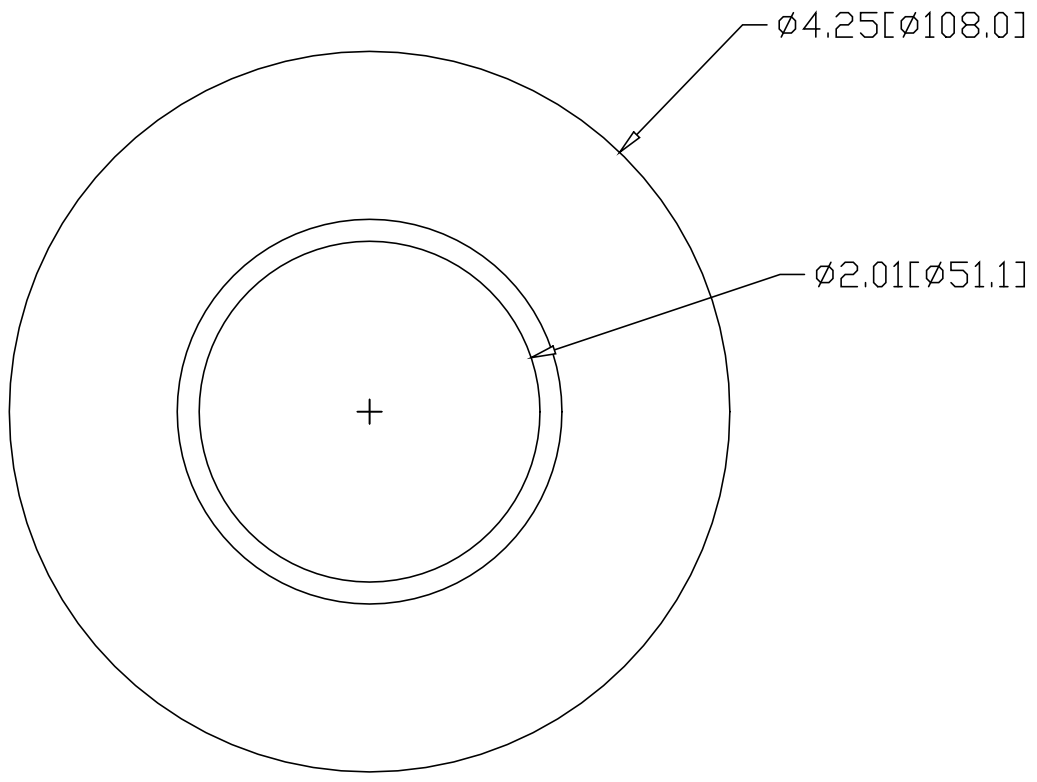



REV  
SH  
642T  
DWG NO

REVISIONS			
REV	DESCRIPTION	DATE	APPROVED



INCHES [MILLIMETERS]

ALTERNATE MATERIAL		PART NUMBER			
.125 (3003) ALUMINUM ASTM B209		682T			
10 GA. (304) STAINLESS STEEL ASTM A240		725T			
PART NAME 2" O.D. TUBE FLAT BASE FLANGE					
MATERIAL 10 GA. HRP&D STEEL ASTM A-569					
DATE 1/11/99		 <b>R &amp; B WAGNER, INC.</b>			
DRAWN BY RJF					
FINISH MILL		SIZE A	WEIGHT .54 lbs	PART NUMBER 642T	REV