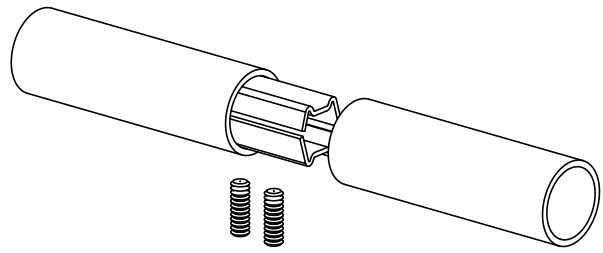
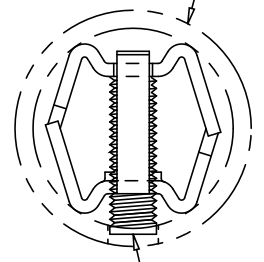


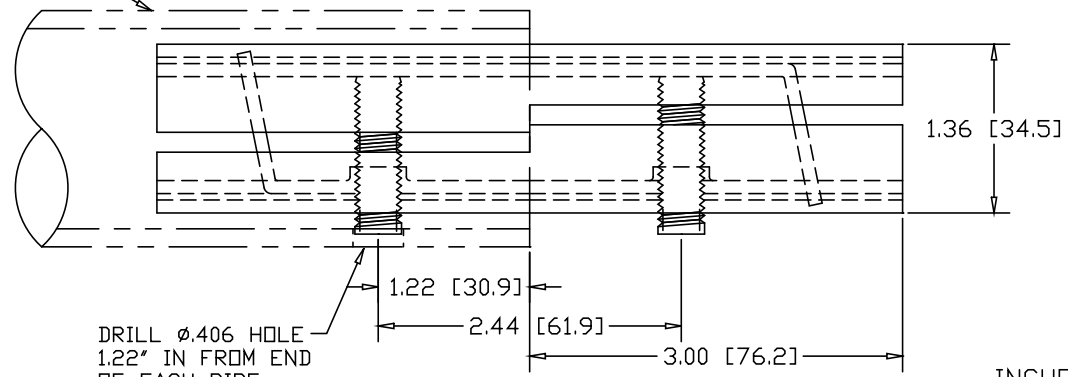
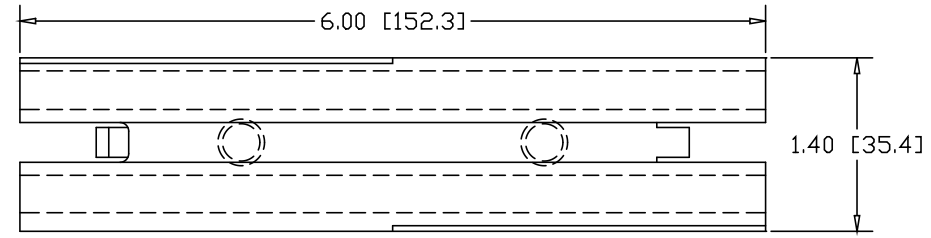
REVISIONS			
REV	DESCRIPTION	DATE	APPROVED



1-1/2" SCHEDULE 40 PIPE
(1.90 O.D. X .145 WALL)




3/8-16
SOCKET HEAD
SET-SCREW
(2) PLACES



DRILL ϕ .406 HOLE
1.22" IN FROM END
OF EACH PIPE

INCHES [MILLIMETERS]

ALTERNATE MATERIAL	PART NO.
13 GA. STEEL HOT DIP GALVANIZED	G3368
13 GA. STEEL ZINC PLATED	PL3368
.090 (3003) ALUMINUM ASTM B209	3384
.090 (304) STAINLESS STEEL ASTM A240	3390

PART NAME		1-1/2" SCH40 DOUBLE-LOCK SPLICE-LOCK 6" LONG		
MATERIAL		13 GA. HRP&D STEEL ASTM A569		
DATE	3/22/93	 R & B WAGNER, INC.		
DRAWN BY	RJF			
FINISH	MILL	SIZE	WEIGHT	PART NUMBER
		A	.88 LBS	3368
				REV