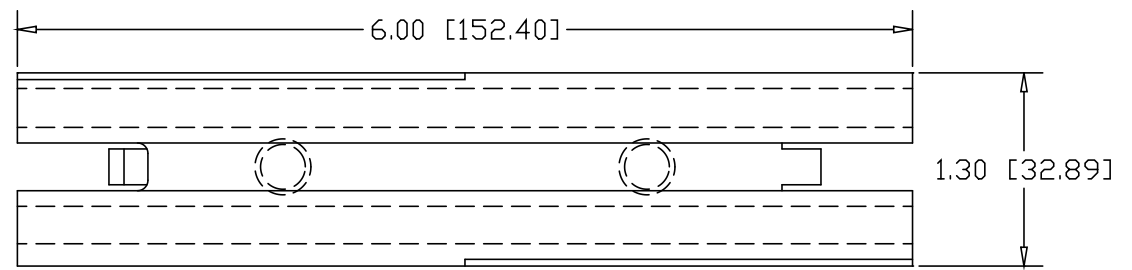
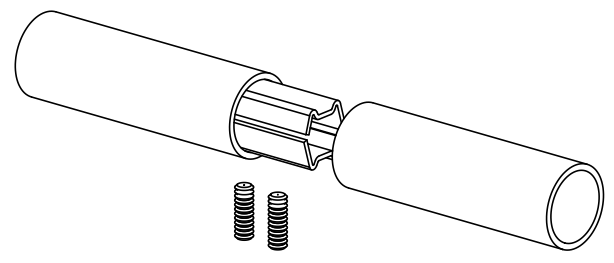
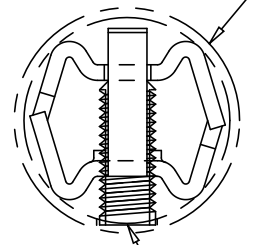


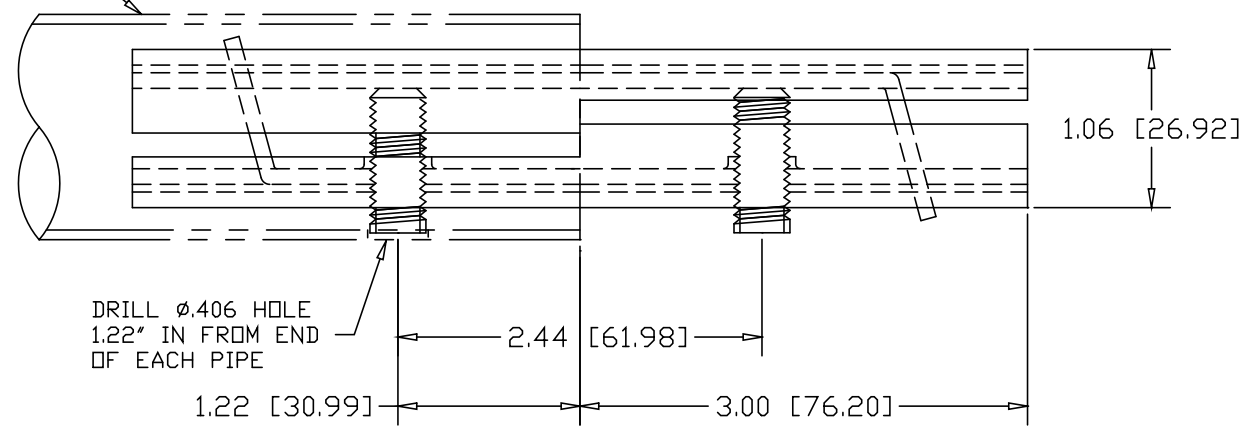
REVISIONS			
REV	DESCRIPTION	DATE	APPROVED



1.50" O.D. X .065W TUBE




3/8-16 SOCKET HEAD SET-SCREW



DRILL  $\phi$ .406 HOLE  
1.22" IN FROM END  
OF EACH PIPE

ALTERNATE MATERIAL	PART NO.
12 GA. STEEL HOT DIP GALVANIZED	G3366-6
12 GA. STEEL ZINC PLATED	PL3366-6
.090 (3003) ALUMINUM ASTM B209	3367-6
.090 (304) STAINLESS STEEL ASTM A240	3369-6

PART NAME		1.50" OD X .065W TUBE DOUBLE-LOCK SPLICE-LOCK 6" LONG					
MATERIAL		12 GA. HRP&D STEEL ASTM A569					
DATE	5/25/93	 <b>R &amp; B WAGNER, INC.</b>					
DRAWN BY	RJF						
FINISH	MILL						
SIZE	A	WEIGHT	.25 LBS	PART NUMBER	3366-6	REV	