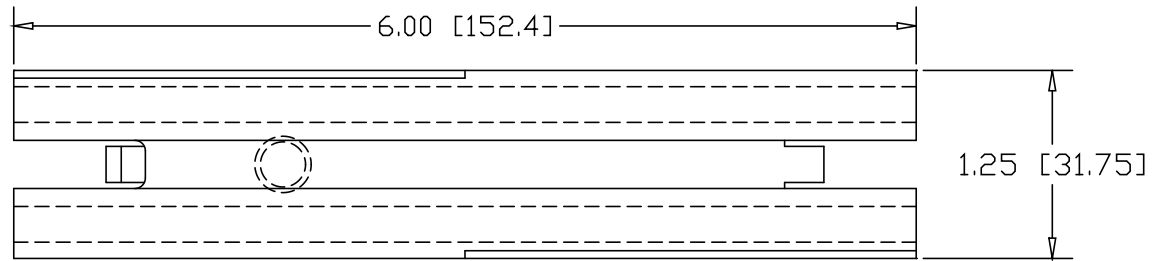
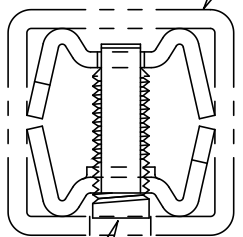


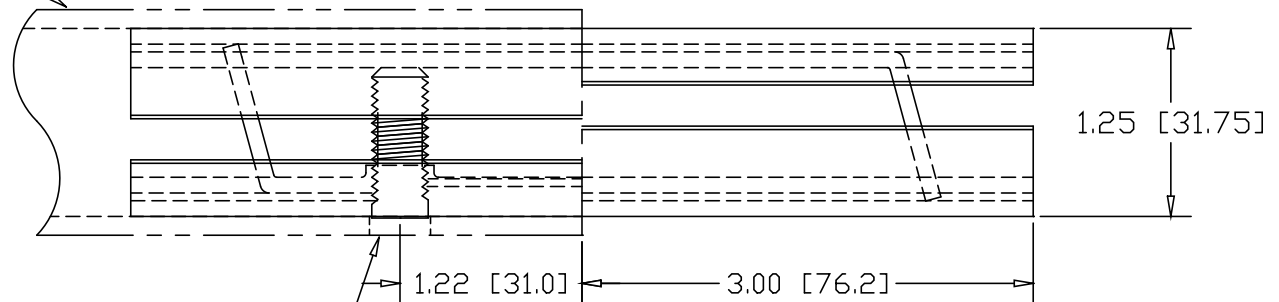
REVISIONS			
REV	DESCRIPTION	DATE	APPROVED



1.50" SQ. .125W TUBE




3/8-16 SOCKET HEAD SET-SCREW



DRILL  $\phi$ .406 HOLE  
1.22" IN FROM END

INCHES [MILLIMETERS]

ALTERNATE MATERIAL	PART NO.
12 GA. STEEL HOT DIP GALVANIZED	G3341-6
12 GA. STEEL ZINC PLATED	PL3341-6
.090 (3003) ALUMINUM ASTM B209	3344-6
.090 (304) STAINLESS STEEL ASTM A240	3347-6

PART NAME 1.50" SQ .125W SINGLE-LOCK SPLICE-LOCK 6" LONG			
MATERIAL 12 GA. HRP&D STEEL ASTM A569			
DATE 9/27/01		R & B WAGNER, INC.	
DRAWN BY JAH			
FINISH MILL			
SIZE A	WEIGHT .81 LBS	PART NUMBER 3341-6	REV