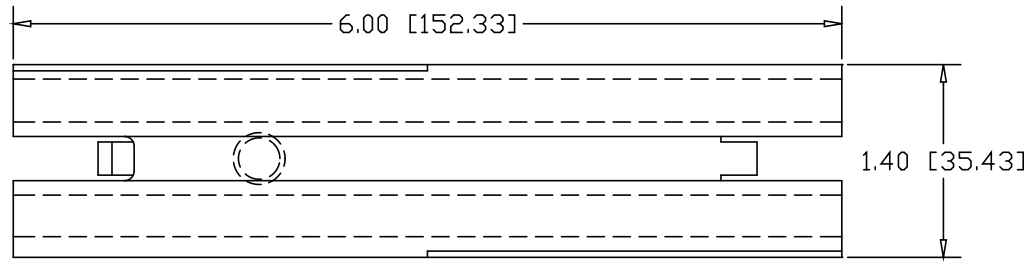
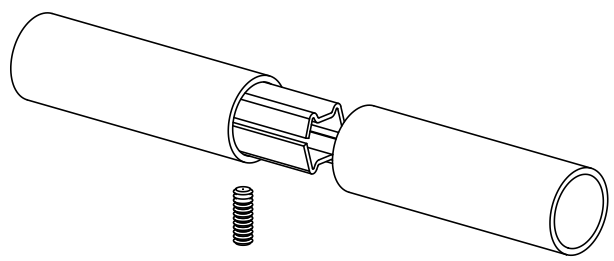
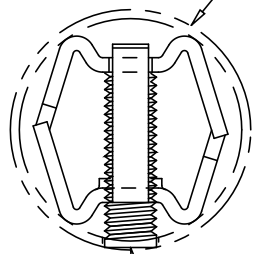


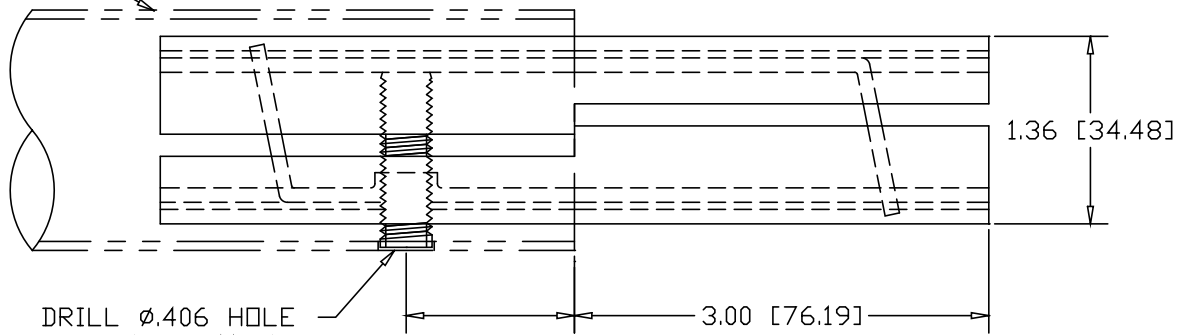
| REVISIONS |             |      |          |
|-----------|-------------|------|----------|
| REV       | DESCRIPTION | DATE | APPROVED |



2.00" O.D. X .065W TUBE



3/8-16 X 1-3/8" SOCKET HEAD SET-SCREW




DRILL Ø.406 HOLE 1.22" IN FROM END

INCHES [MILLIMETERS]

NOTE: SAME SPLICE-LOCK ALSO USED FOR:  
1-1/2" SCH 40 PIPE (PT. #3324)  
AND 2" O.D. X .120W TUBE

| ALTERNATE MATERIAL                   | PART NO. |
|--------------------------------------|----------|
| 12 GA. STEEL HOT DIP GALVANIZED      | G3338-6  |
| 12 GA. STEEL ZINC PLATED             | PL3338-6 |
| .090 (3003) ALUMINUM ASTM B209       | 3328-6   |
| .090 (304) STAINLESS STEEL ASTM A240 | 3335-6   |

|           |         |   |         |             |
|-----------|---------|---|---------|-------------|
| PART NAME |         | 2.00" OD X .065W TUBE SINGLE-LOCK SPLICE-LOCK 6" LONG   |         |             |
| MATERIAL  |         | 12 GA. HRP&O STEEL ASTM A569  |         |             |
| DATE      | 3/22/93 |  <b>R &amp; B WAGNER, INC.</b> |         |             |
| DRAWN BY  | RJF     |   |         |             |
| FINISH    | MILL    | SIZE  | WEIGHT  | PART NUMBER |
|           |         | A   | .88 LBS | 3338-6      |
|           |         |   |         | REV         |