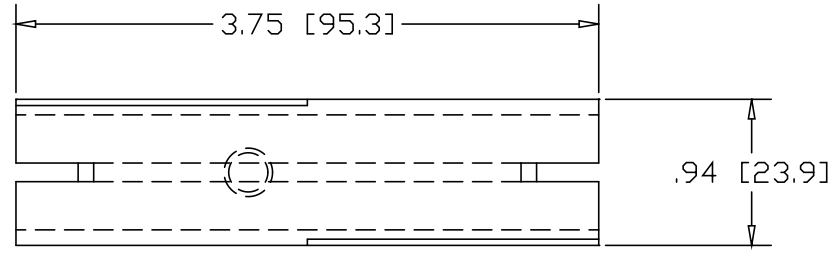
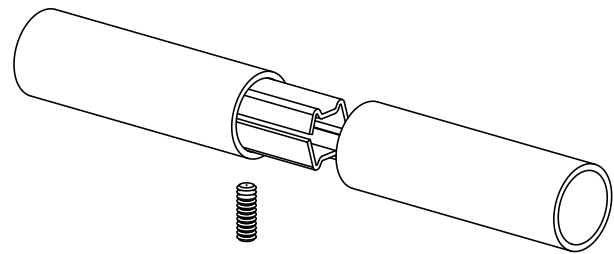
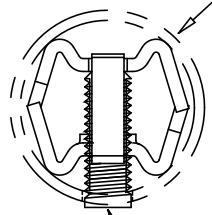


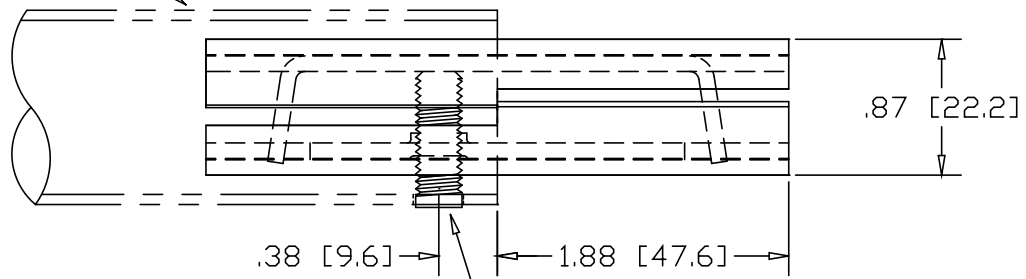
REVISIONS			
REV	DESCRIPTION	DATE	APPROVED



1.25" OD .065W TUBE




5/16-18 SOCKET HEAD SET-SCREW



DRILL  $\phi$ .34[8.6] HOLE  
.38[9.6] IN FROM END  
FOR SET-SCREW

INCHES [MILLIMETERS]

ALTERNATE MATERIAL	PART NO.
12 GA. STEEL HOT DIP GALVANIZED	G3312
12 GA. STEEL ZINC PLATED	PL3312
.090 (3003) ALUMINUM ASTM B209	3331
.090 (304) STAINLESS STEEL ASTM A240	3332

PART NAME		1.25" OD .065W TUBE SINGLE-LOCK SPLICE-LOCK		
MATERIAL		12 GA. HRP&D STEEL ASTM A569		
DATE	9/14/01	 <b>THE WAGNER COMPANIES</b> R & B WAGNER, INC. AND J. G. BRAUN CO.		
DRAWN BY	JAH		SIZE	WEIGHT
FINISH	MILL		A	.26 LBS
		PART NUMBER	3312	REV