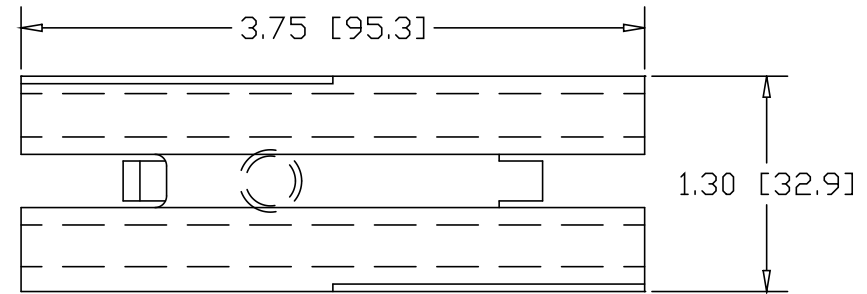
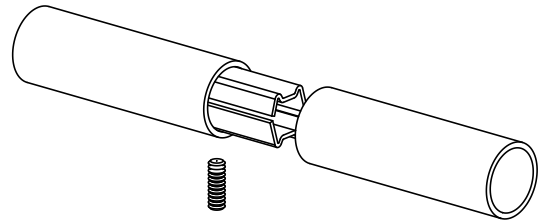
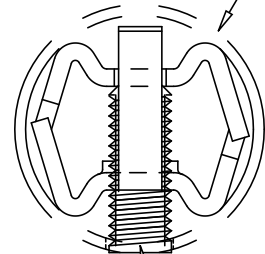


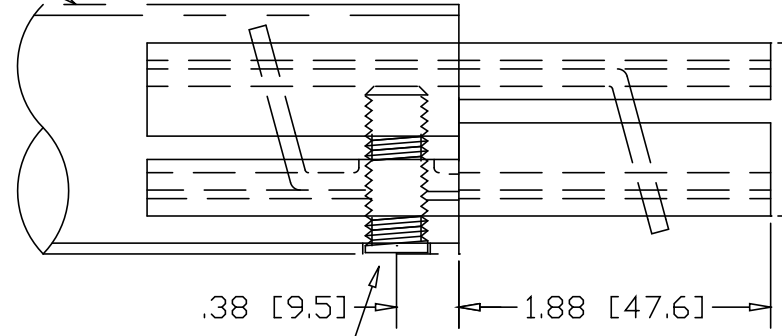
REVISIONS			
REV	DESCRIPTION	DATE	APPROVED



1.50" OD .065W TUBE




3/8-16 SOCKET HEAD SET-SCREW X 1" LG



DRILL ϕ .406 HOLE
.38" IN FROM END

INCHES [MILLIMETERS]

ALTERNATE MATERIAL	PART NO.
12 GA. STEEL HOT DIP GALVANIZED	G3326
12 GA. STEEL ZINC PLATED	PL3326
.090 (3003) ALUMINUM ASTM B209	3327
.090 (304) STAINLESS STEEL ASTM A240	3329

PART NAME				1.50" OD .065W TUBE SINGLE-LOCK SPLICE-LOCK			
MATERIAL				12 GA. HRP&D STEEL ASTM A569			
DATE		9/14/01				THE WAGNER COMPANIES R & B WAGNER, INC. AND J. G. BRAUN CO.	
DRAWN BY		JAH					
FINISH		MILL		SIZE		WEIGHT	
				A		.43 LBS	
				PART NUMBER		3326	
						REV	