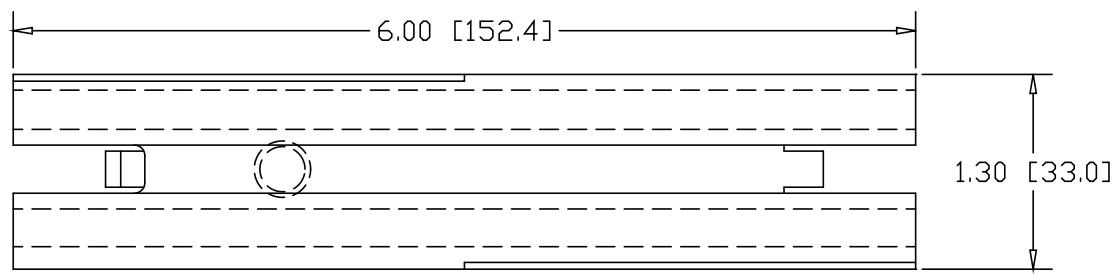
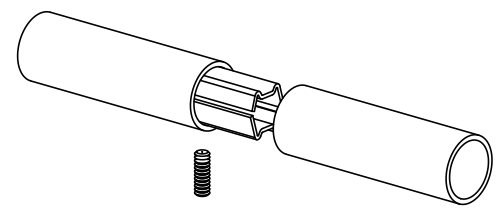
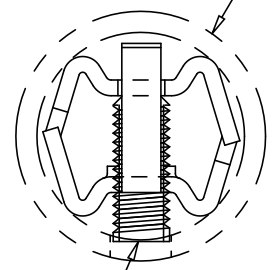


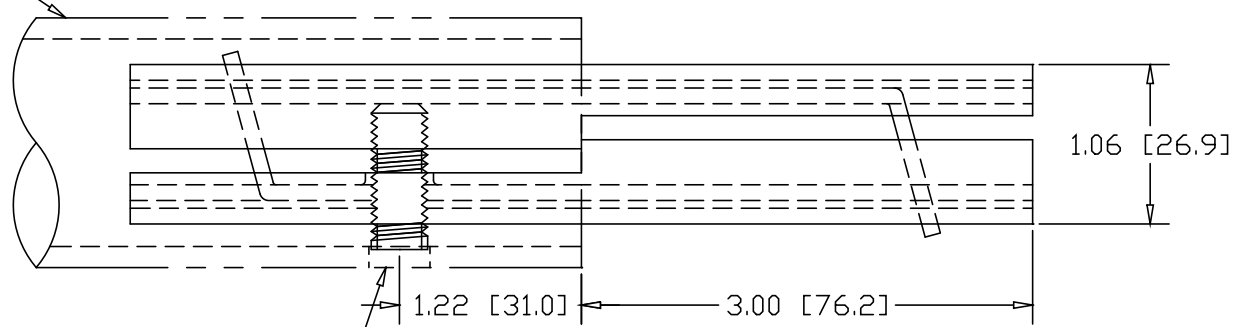
REVISIONS			
REV	DESCRIPTION	DATE	APPROVED



1-1/4" SCHEDULE 40 PIPE
(1.66 O.D. X .140 WALL)




3/8-16 SOCKET HEAD
SET-SCREW



DRILL ϕ .406 HOLE
1.22" IN FROM END

INCHES [MILLIMETERS]

ALTERNATE MATERIAL	PART NO.
12 GA. STEEL HOT DIP GALVANIZED	G3320
12 GA. STEEL ZINC PLATED	PL3320
.090 (3003) ALUMINUM ASTM B209	3342
.090 (304) STAINLESS STEEL ASTM A240	3348-6

PART NAME 1-1/4" SCH40 PIPE SINGLE-LOCK SPLICE-LOCK 6" LONG			
MATERIAL 12 GA. HRP&D STEEL ASTM A569			
DATE	3/22/93	 THE WAGNER COMPANIES R & B WAGNER, INC. AND J. G. BRAUN CO.	
DRAWN BY	RJF		
FINISH	MILL	SIZE	WEIGHT
		A	.73 LBS
		PART NUMBER	REV
		3320	